

Kessenich's



Quote

06/24/2022

To:

Park View Health Center
Cathy Ransom
725 Butler Avenue
Oshkosh, WI 54901
920-237-6921 (Contact)


Project:

Park View Health Center -
Champion Conveyor Dishwasher
725 Butler Avenue
Oshkosh, WI 54901

From:

Kessenich's Ltd
Ron Zeh
3226 Progress Road
Madison, WI 53716
608-249-5391

Job Reference Number: 068941

Item	Qty	Description	Sell	Sell Total
OPT1	1 ea	DISHWASHER, FLIGHT TYPE		
		 Champion Confidential Model No. EUCCW6 (5-6-7, 18ft) CW Series Upright Conveyor Dishwasher, 29" wide peg belt, Dual Rinse feature, automatic tank fill, vent fan control, electric eye idle pump shut-off & rinse saver, stainless steel base & legs, push-button start-stop station - load end, stainless steel front end enclosure panels, SST pumps & impellers, re-circulating flushing nozzles - load end, vent openings with 7" stainless steel stacks & locking dampers - both ends, anti-jam & reverse switch, UL, NSF, ENERGY STAR®		
	1 ea	Supervision of Reassembly & Start-Up. M-F, 8am -- 5pm, please allow (5) days advance notice for scheduling. Factory supervision is coordinated via the Champion service department at 1-800-858-4477. Pricing is NET/NET & not subject to further discounts or rebates.	\$1,236.00	\$1,236.00
	1 ea	1 year parts & labor warranty, standard		
	1 ea	Left to Right operation		
	1 ea	A-2.5 ft. load section	\$8,228.13	\$8,228.13
	1 ea	B-2.5 ft. prewash section with external scrap tank with basket	\$11,820.99	\$11,820.99
	1 ea	C-6 ft. wash-rinse section	\$51,895.80	\$51,895.80
	1 ea	D-7 ft. dual rinse-unload section	\$28,195.26	\$28,195.26
	1 ea	Electric heaters with thermostat & positive low-water cut-off, standard		
	1 ea	Voltage to be 480/60/3ph, Machine Electric Tank Heat Voltage		
	1 ea	Electric Booster Heater, built-in, 70°F maximum rise, 18 kW	\$5,461.02	\$5,461.02
	1 ea	All purpose Single Pitch Peg Belt, standard		
	1 ea	Insulated hinged doors	\$6,114.00	\$6,114.00
	1 pk	REAR Stainless steel enclosure panels	\$3,320.53	\$3,320.53
	1 ea	Stop/start stations on both ends of machine	\$1,218.12	\$1,218.12
	1 ea	Heat recovery system	\$7,619.08	<Optional>
	1 ea	Champion ION scale reduction system	\$2,869.60	<Optional>

Item	Qty	Description	Sell	Sell Total
	1 ea	Custom single point duct to connect to existing system. (Site visit required to gather dimensions)	\$6,149.14	<Optional>
		128,064		
		ITEM TOTAL:		\$117,489.85
OPT2	1 ea	DISHWASHER, FLIGHT TYPE	132,132.44	121,558.35
		Champion Confidential Model No. EUCC6 (5-6-6, 17ft) C Series Slim-Line Upright Conveyor Dishwasher, 24" wide peg belt, Dual Rinse feature, automatic tank fill, vent fan control, electric eye idle pump shut-off & rinse saver, stainless steel base & legs, push-button start-stop station - load end, stainless steel front end enclosure panels, SST pumps & impellers, re-circulating flushing nozzles - load end, vent openings with 7" stainless steel stacks & locking dampers - both ends, anti-jam & reverse switch, UL, NSF , ENERGY STAR®		
	1 ea	Supervision of Reassembly & Start-Up. M-F, 8am – 5pm, please allow (5) days advance notice for scheduling. Factory supervision is coordinated via the Champion service department at 1-800-858-4477. Pricing is NET/NET & not subject to further discounts or rebates.	\$1,236.00	\$1,236.00
	1 ea	1 year parts & labor warranty, standard		
	1 ea	Left to Right operation		
	1 ea	A-2.5 ft. load section	\$7,897.25	\$7,897.25
	1 ea	B-2.5 ft. prewash section with external scrap tank with basket	\$11,346.62	\$11,346.62
	1 ea	C-6 ft. wash-rinse section	\$50,165.26	\$50,165.26
	1 ea	D-6 ft. dual rinse-unload section	\$25,308.10	\$25,308.10
	1 ea	Electric heaters with thermostat & positive low-water cut-off, standard		
	1 ea	Voltage to be 480/60/3ph, Machine Electric Tank Heat Voltage		
	1 ea	Electric Booster Heater, built-in, 70°F maximum rise, 18 kW	\$5,461.02	\$5,461.02
	1 ea	Single Pitch Peg Belt, configured for Sheet Pans	\$1,841.81	\$1,841.81
	1 ea	Insulated hinged doors	\$6,114.00	\$6,114.00
	1 pk	REAR Stainless steel enclosure panels	\$3,320.53	\$3,320.53
	1 ea	Stop/start stations on both ends of machine	\$1,218.12	\$1,218.12
	1 ea	Heat recovery system	\$7,619.08	<Optional>
	1 ea	Champion ION scale reduction system	\$2,869.60	<Optional>
	1 ea	Custom single point duct to connect to existing system. (Site visit required to gather dimensions)	\$6,149.14	<Optional>
		124,159		
		ITEM TOTAL:		\$113,908.71
2	1 ea	RE-ASSEMBLY	128,228	
		Champion Confidential Model No. EUCC/EUCCW RE-ASSEMBLY	\$4,068.50	\$4,068.50
		• Silicone & bolt together machine sections		
		• Inter-connect wiring		
		• Inter-connect plumbing		
		• Install conveyor belt & set tension		
		• Supervision is included		
		117,977		

Item	Qty	Description	Sell	Sell Total
		<ul style="list-style-type: none"> • If beyond 60 miles, please contact the local service agent for additional cost • Factory requires 30 day notice prior to the install, to plan accordingly • NET/NET PRICING (NO FURTHER DISCOUNTS) 		

PRICE DOES NOT INCLUDE THE OPTIONAL SINGLE POINT DUCT

ITEM TOTAL: \$4,068.50

Total \$235,467.06

GET FINANCED QUICKLY WITH Pay

- Competitive terms and rates
- Seamless integration with AutoQuotes
- Solutions for most credit profiles
- 3-minute application

Questions? 844-783-7600

*Terms and financing rates are subject to change and should be verified when applying for financing.

Powered by **CURRENCY.**

These prices do not include shipping or sales tax unless otherwise noted.

Unless noted otherwise, quotes are good for 30 days.

Order & Return Policy: Stock products may be returned unused and undamaged, in salable condition with original packaging within 60 days from purchase for full credit. Non-stock/Special orders require signature and full payment (including freight and taxes) at time of order. Special order items returned unused and undamaged within 30 days from date of purchase will be charged a 30% restock fee plus return freight. Refunds will be available after Kessenich's receives the manufacturer's credit. Items not claimed within 6 months will be charged all manufacturer's restock fees. Custom-made products require signature and full payment (including freight and taxes) at time of order. Items are not returnable or refundable. Contact Kessenich's Ltd for full terms and conditions.

Services are available that include uncrating, unboxing, assembling, delivering and setting in spot of all equipment at owner's location by Kessenich's personnel. Please contact your Kessenich's salesperson for a quote. All plumbing, electrical and other installation work to be done by appropriate trades and are owners responsibility.

If using AQ Pay and using a Credit Card you will be charged with a 3% fee

Acceptance: _____ Date: _____

Printed Name: _____

Project Grand Total: \$235,467.06

Champion®

The Dishwashing Machine Specialists

Project _____

Item No. _____

Quantity _____

STANDARD FEATURES

- **NEW Factory authorized startup**
- **ENERGY STAR® Qualified**
- **Exclusive Dual Rinse Technology**
- All-purpose 29" wide peg belt
- Dish capacities up to 15,027 dishes per hour (NSF Certified)
- Automatic tank fill
- Chemical dispensing equipment connection provisions
- Choice of tank heat: electric, steam coils or direct steam injectors
- Common hot water connection
- Common drain connection
- Common electric connection (separate connection required for optional electric booster and blower-dryer)
- One piece stainless steel wash/rinse manifold system, easy to remove
- Door safety switch
- Electric eye energy sentinel (idle pump shut-off)
- Easy-to-reach top-mounted controls
- Heavy-gauge stainless construction
- Low-water tank heat protection
- Push-button start-stop station – load end
- Recirculating flushing nozzles – load end with prewash
- Rinse saver device
- Conveyor shut-off shelf – unload end
- Stainless steel enclosure panels – front & ends
- Vent fan control connection provided

OPTIONAL WORLD CLASS FEATURES

- **Heat Recovery** – redirects lost steam to heat using less energy

*The DualRinse feature offers the
Lowest Water/Utility/Chemical Consumption
as low as 57 GPH usage while circulating
as much as 400 gallons of water for
Consistently Good Results*

EUCCW SERIES

Upright 29" Conveyor
Dual Rinse Dishwashing Machine

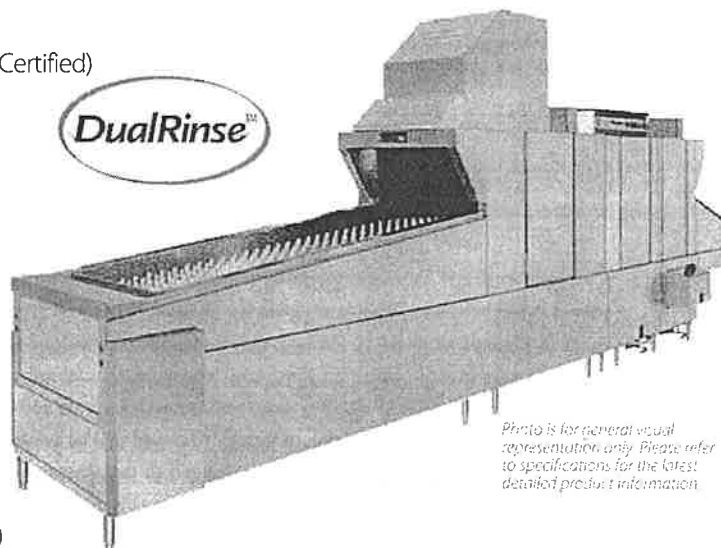


Photo is for general visual
representation only. Please refer
to specifications for the latest
detailed product information.

SPECIFIER STATEMENT

Specified unit will be Champion model EUCCW4, EUCCW6 or EUCCW8 upright 29" conveyor water saver dishwashing machine.

Features automatic tank fill, chemical dispensing connection provisions, common water, drain and electrical connections, door safety switch, low water tank heat protection, rinse saver.

1 year parts and labor warranty.



2674 N. Service Road,
Jordan Station, Ontario, Canada L0R 1S0
Tel: 905-562-4195 Fax: 905/562-4618

CH104

(pdf) 4/16



Champion Industries, Inc.
3765 Champion Boulevard, Winston-Salem, NC 27105 Tel:
336/661-1556 Fax: 336/661-1979
www.championindustries.com



Champion®

The Dishwashing Machine Specialists

The Dishwashing Machine Specialists

Dimensions shown in inches and [millimeters]

[illegible]

Machine Only - Electric Heat			
Elec. Specs.	Rated Amps	Minimum Supply Ckt. Conductor Ampacity	Maximum Overcurrent Protective Device
208/60/3	171	200	200
240/60/3	149	175	175
480/60/3	74	90	90

Elec. Specs.	Rated Amps	Minimum Supply Ckt. Conductor Ampacity	Maximum Overcurrent Protective Device
208/60/3	21	25	25
240/60/3	18	25	25
480/60/3	10	15	15

Elec. Specs.	Rated Amps	Minimum Supply Ckt. Conductor Ampacity	Maximum Overcurrent Protective Device
208/60/3	28	35	35
240/60/3	24	30	30
480/60/3	12	15	15

Elec. Specs.	Rated Amps	Minimum Supply Ckt. Conductor Ampacity	Maximum Overcurrent Protective Device
208/60/3	50	60	60
240/60/3	44	50	50
480/60/3	22	30	30

- Load Section (A) Standard 5', contains 30" Prewash
- Prewash also available in a 48" HD section
- Non-standard load section available in 12" increments
- Minimum load length 5' (includes 30" prewash)
- Unload Section (B) Standard 5 ft contains 24" Aux.
- Rinse and 36" belt, available in 12" increments
- Built in electric booster requires a 5' minimum unload
- Built in steam booster requires a minimum 6' unload
- Blow dryer section adds 4' to overall length of machine

Due to an ongoing value analysis program at Champion, specifications contained in this catalog are subject to change without notice.

Page: 5

The Dishwashing Machine Specialists

MODULAR SECTIONS: Right to Left Operation

Dimensions shown in inches and [millimeters]

Page: 6

Champion®

The Dishwashing Machine Specialists

The Dishwashing Machine Specialists

Dimensions shown in inches and [millimeters]

Dimensions shown in inches and [millimeters]



Machine Only - Electric Heat			
Elec. Specs.	Rated Amps	Minimum Supply Ckt. Conductor Ampacity	Minimum Overcurrent Protective Device
208/60/3	183	250	250
240/60/3	158	200	200
480/60/3	80	100	100

Elec. Specs.	Rated Amps	Minimum Supply Ckt. Conductor Ampacity	Minimum Overcurrent Protective Device
208/60/3	29	40	40
240/60/3	26	35	35
480/60/3	14	20	20

40°F/22°C Rise – 10 kW Electric built-in booster			
Elec. Specs.	Rated Amps	Minimum Supply Ckt. Conductor Ampacity	Minimum Overcurrent Protective Device
208/60/3	28	35	35
240/60/3	24	30	30
480/60/3	12	15	15

Elec. Specs.	Rated Amps	Minimum Supply Ckt. Conductor Ampacity	Minimum Overcurrent Protective Device
208/60/3	50	60	60
240/60/3	44	50	50
480/60/3	22	30	30

- Load Section (A) Standard 5', contains 30" Prewash
- Prewash also available in a 48" HD section
- Non-standard load section available in 12" increments
- Minimum load length 5' (includes 30" prewash)
- Unload Section (B) Standard 5 ft contains 24" Aux.
- Rinse and 36" belt, available in 12" increments
- Built in electric booster requires a 5' minimum unload
- Built in steam booster requires a minimum 6' unload
- Blow dryer section adds 4' to overall length of machine

Due to an ongoing value analysis program at Champion, specifications contained in this catalog are subject to change without notice.

Page: 7

Champion®

The Dishwashing Machine Specialists

EUCCW SERIES

Upright 29" Conveyor
Dual Rinse
Dishwashing Machine

Shipping weight crated: **150 lbs./ft.[68kg./m.]**
Height with doors up: **95"**
Height to remove doors: **100"**

SPECIFICATIONS

Capacities	EUCCW4	EUCCW6	EUCCW8
Dishes per hr. (NSF rated)	9,965	13,445	15,027
Conveyor speed (ft./min.)	6.3	8.5	9.5
Motor horsepower			
Drive	1/2 Hp	1/2 Hp	1/2 Hp
Prewash 30" [762]	1 Hp	1 Hp	1 Hp
Prewash 48" [1219]	3 Hp	3 Hp	3 Hp
Wash	3 Hp	3 Hp	3 Hp
Power Rinse*	N/A	3 Hp	3 Hp
Auxiliary Rinse	1/5 Hp	1/5 Hp	1/5 Hp
Water consumption			
Gal. per hr. (max. use)	58	57	58
Temperatures °F			
Wash (min.)	160	150	150
Power Rinse (min.)*	N/A	160	160
Auxiliary Rinse (min.)	165	165	165
Final rinse (min.)	180	180	180
Heating			
Tank heat	Steam	Electric	
Wash tank	125 lbs./hr.	25 kW	
Wash tank (EUCCW4)	225 lbs./hr.	45 kW	
Rinse tank *	100 lbs./hr.	20 kW	
Auxiliary rinse	50 lbs./hr.	10 kW	
Electric booster (kW required for 40°F rise)	10	10	10
Electric booster (kW required for 70°F rise)	18	18	18
Steam booster (lbs./hr. required for 40°F rise)	50	50	50
Steam booster (lbs./hr. required for 70°F rise)	90	90	90
Venting			
Minimum CFM, load end			300
Minimum CFM, unload end			800

*EUCCW4 has no power rinse tank

Booster connections may vary. Contact the Factory.

Standard Voltages (Specify choice): 208/60/3, 240/60/3, and 480/60/3. Available in 3-phase only. For non-standard 3-phase voltages, contact the Factory.

Plumbing Notes Because of the variation in house-supplied water pressure, a water pressure regulating valve (PRV) is needed (water PRV is standard with a booster). Steam PRV's may be required for pressure higher than 30 psi. The PRV's can either be purchased from Champion or obtained locally.

Utilities EUCCW4

- Electrical Connection**
 - A Machine connection (see table A)
 - B Booster connection (see table A)
- Hot Water**
3/4" NPT 180°F hot water connection.
(For machine without built-in booster)
- Drain**
2" NPT connection, 62 gpm max flow rate
- Vents**
 - A Load end: 300 CFM 1/4" S.P.
 - B Unload end: 800 CFM 1/4" S.P. With blower-dryer, increase room ventilation by 600 CFM.

Utilities EUCCW6

- Electrical Connection**
Contact factory for specific machine electrical requirements
NOTE: Electric booster connection – contact Factory
- Hot Water**
3/4" NPT 180°F hot water connection.
(For machine without built-in booster)
- Drain**
2" NPT connection, 62 gpm max flow rate
- Vents**
 - A Load end: 300 CFM 1/4" S.P.
 - B Unload end: 800 CFM 1/4" S.P. With blower-dryer, increase room ventilation by 600 CFM.

Utilities EUCCW8

- Electrical Connection**
Contact factory for specific machine electrical requirements
NOTE: Electric booster connection – contact Factory
- Hot Water**
3/4" NPT 180°F hot water connection.
(For machine without built-in booster)
- Drain**
2" NPT connection, 62 gpm max flow rate
- Vents**
 - A Load end: 300 CFM 1/4" S.P.
 - B Unload end: 800 CFM 1/4" S.P. With blower-dryer, increase room ventilation by 600 CFM.

Warning Plumbing and electrical connections should be made by qualified personnel who will observe all the applicable plumbing, sanitary, safety codes and the National Electrical Code.

Note Water Hammer Arrestor (meeting ASSE-1010 standard or equivalent) to be supplied (by others) in common water supply line at service connection.

Venting Notes

Fabricated duct size: 3-7/8" x 23-7/8" (outside dimensions)

Due to an ongoing value analysis program at Champion, specifications contained in this catalog are subject to change without notice.

Champion Industries, Inc., 3765 Champion Boulevard, Winston-Salem, NC 27105 • 336/661-1556 • Fax: 336/661-1979 • www.championindustries.com
2674 N. Service Road, Jordan Station, Ontario, Canada L0R 1S0 • 905/562-4195 • Fax: 905/562-4618



EUCCW SERIES

Upright 29" Conveyor
Dual Rinse
Dishwashing Machine

Champion®
The Dishwashing Machine Specialists

Control Panel



Digital Gauges

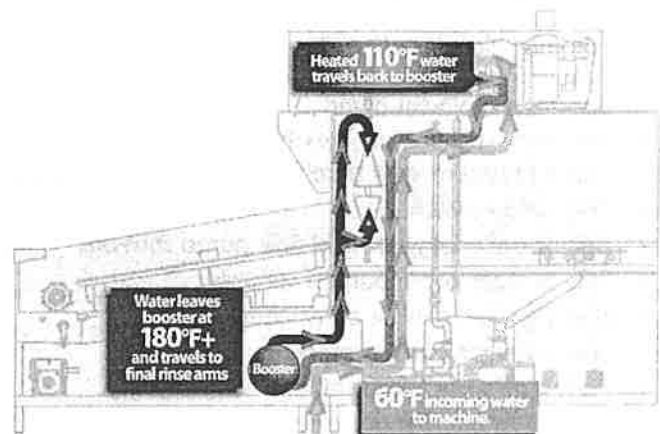


OPTIONS & ACCESSORIES

- ☐ Tank heat; choices of electric, steam coil or steam injectors
- ☐ Booster Heaters – stainless steel (completely inter-plumbed, controls are inter-wired)
 - ☐ Electric: (40°F rise or 70°F rise)
 - ☐ Steam: (40°F or 70°F rise)
- ☐ 48" Blower Dryer, electric or steam (add 4' to overall length)
- ☐ Belts: standard peg belt, flat belt, thermal tray belt, silverware belt, belts with upper cross rods, and other select combination belts
- ☐ Start/Stop station, unload end
- ☐ Back panels, stainless steel
- ☐ Cold water thermostat (for pre-wash)
- ☐ External scrap bucket on 48" pre-wash (standard on 30" pre-wash)
- ☐ External scrap bucket on wash tank
- ☐ Insulated hoods, lower panels
- ☐ Motor pumps, 2 or 3 Hp optional in lieu of 1 Hp on pre-wash
- ☐ Bumper rail, machine mounted
- ☐ Steam pressure regulating valve (unmounted)
- ☐ Drain water tempering kit (mounted)
- ☐ Insulated hinged door

Heat Recovery –

Redirects lost steam to heat using less energy.



- ☐ Shock arrestor (water)
- ☐ Drain interlocks
- ☐ Heat Recovery Unit redirects lost steam to heat using less energy
- ☐ **NEW** Champion ION scale prevention system

Due to an ongoing value analysis program at Champion, specifications contained in this catalog are subject to change without notice.
Champion Industries, Inc., 3765 Champion Boulevard, Winston-Salem, NC 27105 • 336/661-1556 • Fax: 336/661-1979 • www.championindustries.com
2674 N. Service Road, Jordan Station, Ontario, Canada L0R 1S0 • 905/562-4195 • Fax: 905/562-4618

Champion®

The Dishwashing Machine Specialists

Project _____

Item No. _____

Quantity _____

STANDARD FEATURES

- **NEW** Factory authorized startup
- **ENERGY STAR®** Qualified
- **Exclusive Dual Rinse Technology**
- All-purpose 29" wide peg belt
- Dish capacities up to 15,027 dishes per hour (NSF Certified)
- Automatic tank fill
- Chemical dispensing equipment connection provisions
- Choice of tank heat: electric, steam coils or direct steam injectors
- Common hot water connection
- Common drain connection
- Common electric connection (separate connection required for optional electric booster and blower-dryer)
- One piece stainless steel wash/rinse manifold system, easy to remove
- Door safety switch
- Electric eye energy sentinel (idle pump shut-off)
- Easy-to-reach top-mounted controls
- Heavy-gauge stainless construction
- Low-water tank heat protection
- Push-button start-stop station – load end
- Recirculating flushing nozzles – load end with prewash
- Rinse saver device
- Conveyor shut-off shelf – unload end
- Stainless steel enclosure panels – front & ends
- Vent fan control connection provided

OPTIONAL WORLD CLASS FEATURES

- **Heat Recovery** – redirects lost steam to heat using less energy

*The DualRinse feature offers the
Lowest Water/Utility/Chemical Consumption
as low as 57 GPH usage while circulating
as much as 400 gallons of water for
Consistently Good Results*

EUCCW SERIES

Upright 29" Conveyor
Dual Rinse Dishwashing Machine

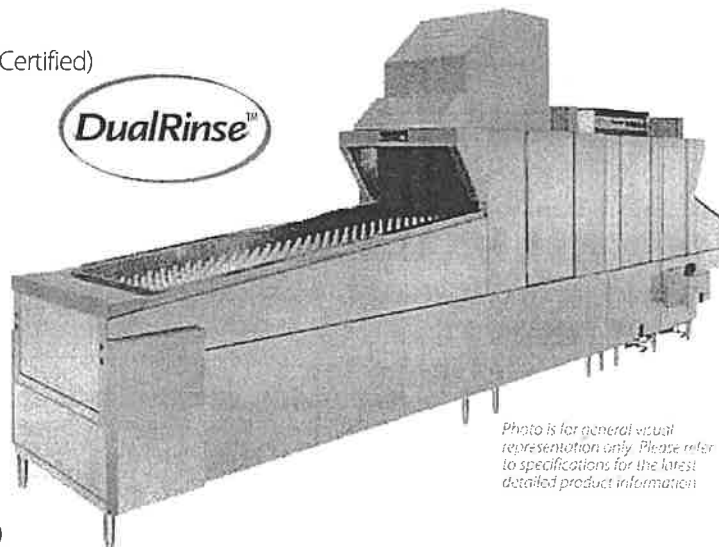


Photo is for general visual representation only. Please refer to specifications for the latest detailed product information.

SPECIFIER STATEMENT

Specified unit will be Champion model EUCCW4, EUCCW6 or EUCCW8 upright 29" conveyor water saver dishwashing machine.

Features automatic tank fill, chemical dispensing connection provisions, common water, drain and electrical connections, door safety switch, low water tank heat protection, rinse saver.

1 year parts and labor warranty.

2674 N. Service Road,
Jordan Station, Ontario, Canada L0R 1S0
Tel: 905-562-4195 Fax: 905/562-4618

CH104

(pdf) 4/16



Champion Industries, Inc.
3765 Champion Boulevard, Winston-Salem, NC 27105 Tel:
336/661-1556 Fax: 336/661-1979
www.championindustries.com



EUCCW SERIES

Upright 29" Conveyor
Dual Rinse
Dishwashing Machine

Champion®
The Dishwashing Machine Specialists

MODULAR SECTIONS: Right to Left Operation

Dimensions shown in inches and (millimeters)

EUCCW4

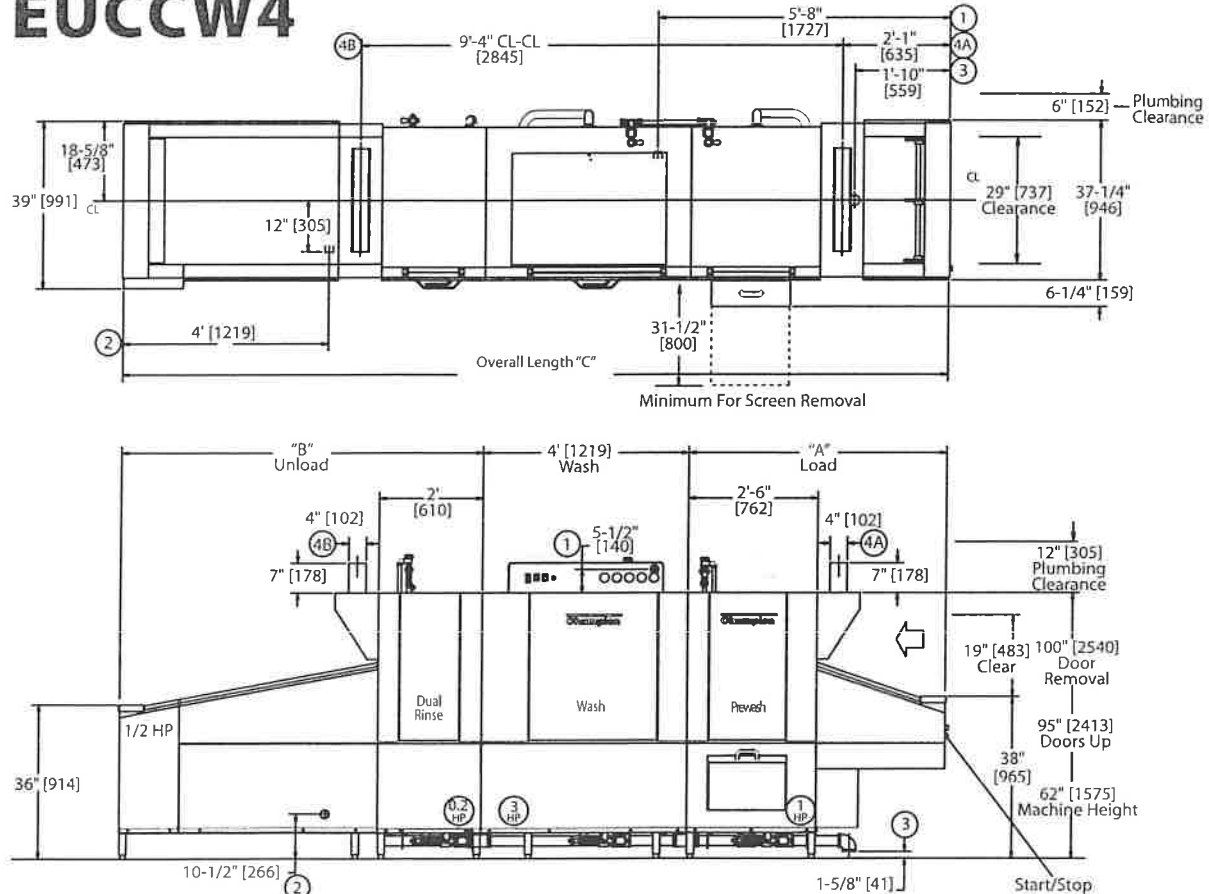


TABLE A - Machine Connection

Machine Only - Electric Heat			
Elec. Specs.	Rated Amps	Minimum Supply Ckt. Conductor Ampacity	Maximum Overcurrent Protective Device
208/60/3	171	200	200
240/60/3	149	175	175
480/60/3	74	90	90

Machine-steam			
Elec. Specs.	Rated Amps	Minimum Supply Ckt. Conductor Ampacity	Maximum Overcurrent Protective Device
208/60/3	21	25	25
240/60/3	18	25	25
480/60/3	10	15	15

Notes:

- Load Section (A) Standard 5' contains 30" Prewash
- Prewash also available in a 48" HD section
- Non-standard load section available in 12" increments
- Minimum load length 5' (includes 30" prewash)
- Unload Section (B) Standard 5 ft contains 24" Aux.
- Rinse and 36" belt, available in 12" increments
- Built in electric booster requires a 5' minimum unload
- Built in steam booster requires a minimum 6' unload
- Blow dryer section adds 4' to overall length of machine

TABLE B - Booster Connection

40°F/22°C Rise - 10kW Electric Built-in Booster			
Elec. Specs.	Rated Amps	Minimum Supply Ckt. Conductor Ampacity	Maximum Overcurrent Protective Device
208/60/3	28	35	35
240/60/3	24	30	30
480/60/3	12	15	15

70°F/39°C Rise - 18kW Electric Built-in Booster			
Elec. Specs.	Rated Amps	Minimum Supply Ckt. Conductor Ampacity	Maximum Overcurrent Protective Device
208/60/3	50	60	60
240/60/3	44	50	50
480/60/3	22	30	30

Contact Factory for additional voltages.

Due to an ongoing value analysis program at Champion, specifications contained in this catalog are subject to change without notice.

Champion Industries, Inc., 3765 Champion Boulevard, Winston-Salem, NC 27105 • 336/661-1556 • Fax: 336/661-1979 • www.championindustries.com
2674 N. Service Road, Jordan Station, Ontario, Canada L0R 1S0 • 905/562-4195 • Fax: 905/562-4618

EUCCW SERIES

Upright 29" Conveyor
Dual Rinse
Dishwashing Machine

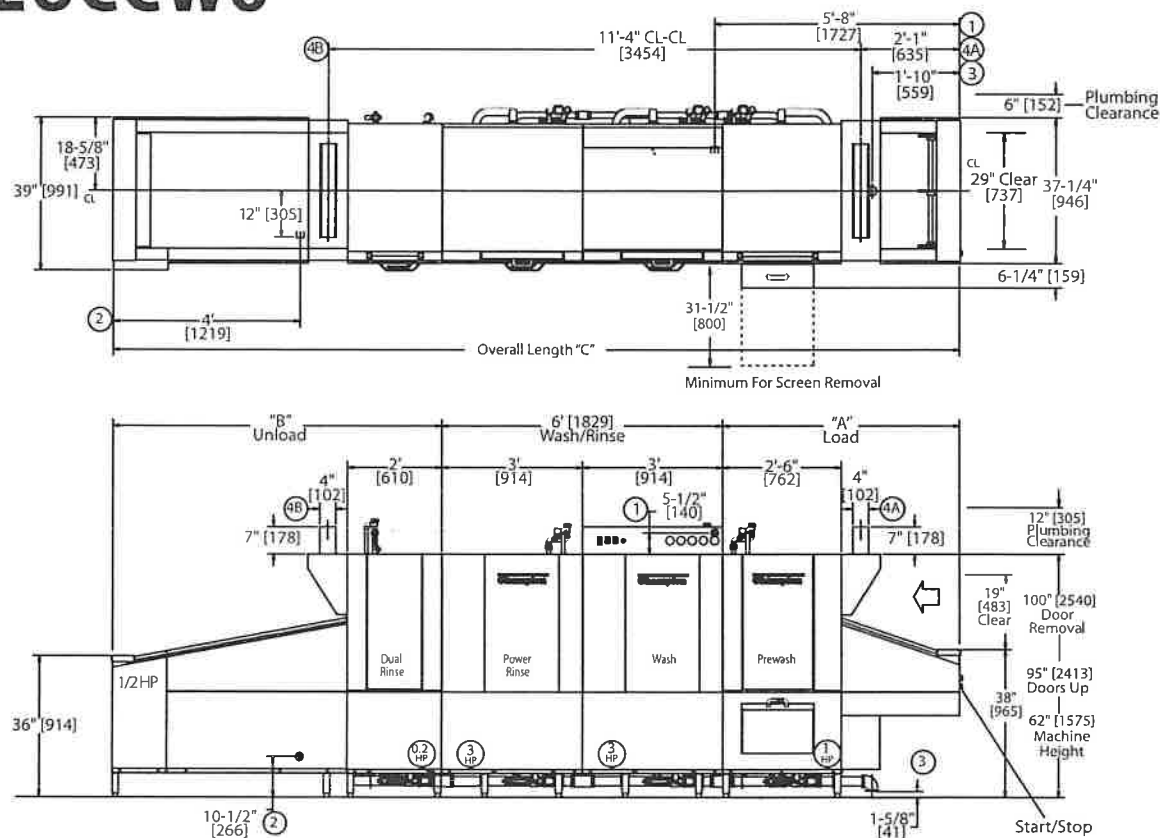
Champion®

The Dishwashing Machine Specialists

MODULAR SECTIONS: Right to Left Operation

Dimensions shown in inches and [millimeters]

EUCCW6

**TABLE A - Machine Connection**

Machine Only - Electric Heat			
Elec. Specs.	Rated Amps	Minimum Supply Ckt. Conductor Ampacity	Maximum Overcurrent Protective Device
208/60/3	183	250	250
240/60/3	158	200	200
480/60/3	80	100	100

Machine-steam

Elec. Specs.	Rated Amps	Minimum Supply Ckt. Conductor Ampacity	Maximum Overcurrent Protective Device
208/60/3	29	40	40
240/60/3	26	35	35
480/60/3	14	20	20

TABLE B - Booster Connection

40°F/22°C Rise – 10kW Electric Built-in Booster			
Elec. Specs.	Rated Amps	Minimum Supply Ckt. Conductor Ampacity	Maximum Overcurrent Protective Device
208/60/3	28	35	35
240/60/3	24	30	30
480/60/3	12	15	15

70°F/39°C Rise 18kW Electric Built in Booster

Elec. Specs.	Rated Amps	Minimum Supply Ckt. Conductor Ampacity	Maximum Overcurrent Protective Device
208/60/3	50	60	60
240/60/3	44	50	50
480/60/3	22	30	30

Notes:

- Load Section (A) Standard 5', contains 30" Prewash
- Prewash also available in a 48" HD section
- Non-standard load section available in 12" increments
- Minimum load length 5' (includes 30" prewash)
- Unload Section (B) Standard 5 ft contains 24" Aux.
- Rinse and 36" belt, available in 12" increments
- Built in electric booster requires a 5' minimum unload
- Built in steam booster requires a minimum 6' unload
- Blow dryer section adds 4' to overall length of machine

Contact Factory for additional voltages.

Due to an ongoing value analysis program at Champion, specifications contained in this catalog are subject to change without notice.

Champion Industries, Inc., 3765 Champion Boulevard, Winston-Salem, NC 27105 • 336/661-1556 • Fax: 336/661-1979 • www.championindustries.com
2674 N. Service Road, Jordan Station, Ontario, Canada L0R 1S0 • 905/562-4195 • Fax: 905/562-4618

EUCCW SERIES

Upright 29" Conveyor
Dual Rinse
Dishwashing Machine

Champion®
The Dishwashing Machine Specialists

MODULAR SECTIONS: Right to Left Operation

Dimensions shown in inches and [millimeters]

EUCCW8

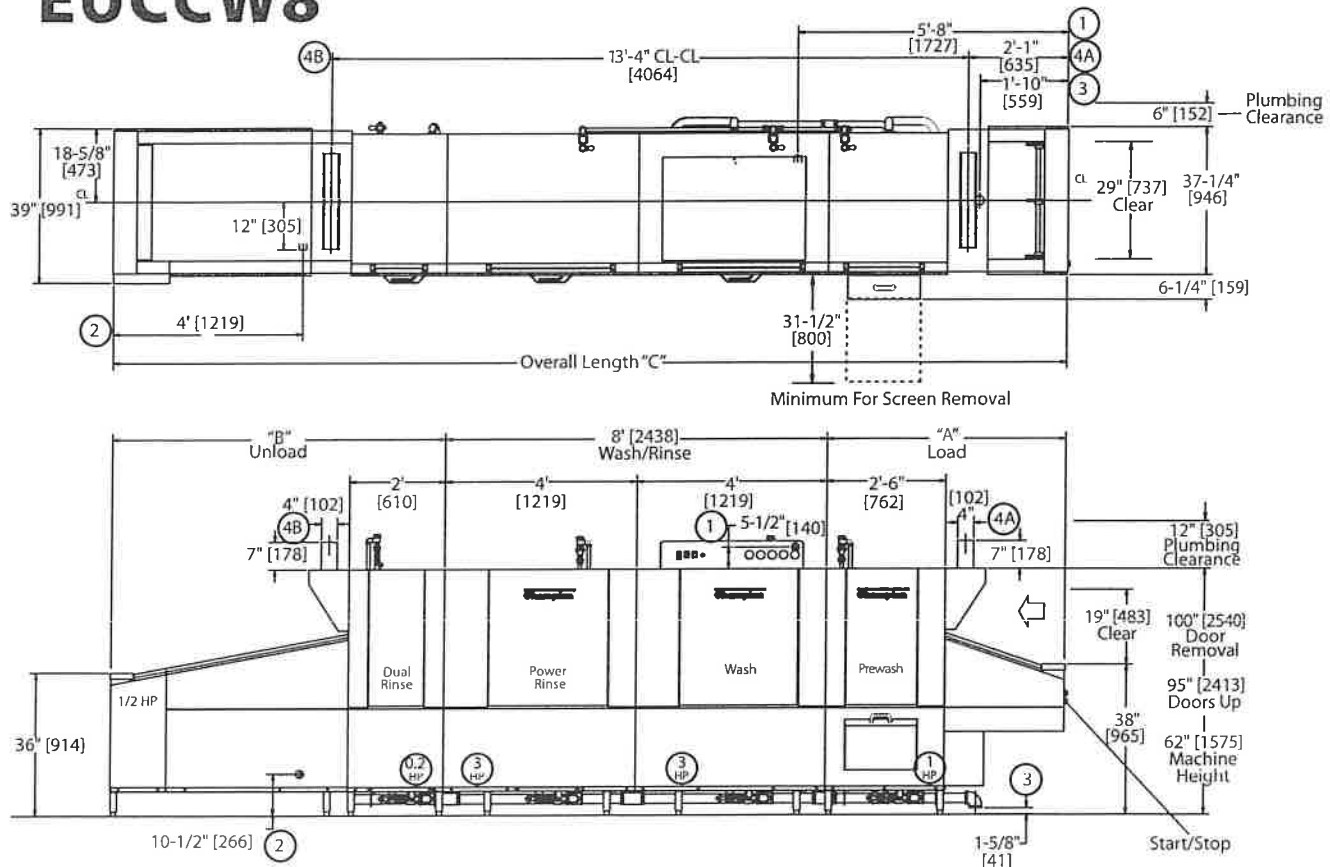


TABLE A - Machine Connection

Machine Only - Electric Heat

Elec. Specs.	Rated Amps	Minimum Supply Ckt. Conductor Ampacity	Minimum Overcurrent Protective Device
208/60/3	183	250	250
240/60/3	158	200	200
480/60/3	80	100	100

TABLE B - Booster Connection

40°F/22°C Rise - 10 kW Electric built-in booster

Elec. Specs.	Rated Amps	Minimum Supply Ckt. Conductor Ampacity	Minimum Overcurrent Protective Device
208/60/3	28	35	35
240/60/3	24	30	30
480/60/3	12	15	15

Machine-steam

Elec. Specs.	Rated Amps	Minimum Supply Ckt. Conductor Ampacity	Minimum Overcurrent Protective Device
208/60/3	29	40	40
240/60/3	26	35	35
480/60/3	14	20	20

70°F/39°C Rise - 18kW Electric built-in booster

Elec. Specs.	Rated Amps	Minimum Supply Ckt. Conductor Ampacity	Minimum Overcurrent Protective Device
208/60/3	50	60	60
240/60/3	44	50	50
480/60/3	22	30	30

Contact Factory for additional voltages.

Notes:

- Load Section (A) Standard 5', contains 30" Prewash
- Prewash also available in a 48" HD section
- Non-standard load section available in 12" increments
- Minimum load length 5' (includes 30" prewash)
- Unload Section (B) Standard 5 ft contains 24" Aux.
- Rinse and 36" belt, available in 12" increments
- Built in electric booster requires a 5' minimum unload
- Built in steam booster requires a minimum 6' unload
- Blow dryer section adds 4' to overall length of machine

Due to an ongoing value analysis program at Champion, specifications contained in this catalog are subject to change without notice.

Champion Industries, Inc., 3765 Champion Boulevard, Winston-Salem, NC 27105 • 336/661-1556 • Fax: 336/661-1979 • www.championindustries.com
2674 N. Service Road, Jordan Station, Ontario, Canada L0R 1S0 • 905/562-4195 • Fax: 905/562-4618

Champion®

The Dishwashing Machine Specialists

EUCCW SERIES

Upright 29" Conveyor
Dual Rinse
Dishwashing Machine

Shipping weight crated: **150 lbs./ft.[68kg./m.]**
Height with doors up: **95"**
Height to remove doors: **100"**

SPECIFICATIONS

Capacities	EUCCW4	EUCCW6	EUCCW8
Dishes per hr. (NSF rated)	9,965	13,445	15,027
Conveyor speed (ft./min.)	6.3	8.5	9.5
Motor horsepower			
Drive	1/2 Hp	1/2 Hp	1/2 Hp
Prewash 30" [762]	1 Hp	1 Hp	1 Hp
Prewash 48" [1219]	3 Hp	3 Hp	3 Hp
Wash	3 Hp	3 Hp	3 Hp
Power Rinse*	N/A	3 Hp	3 Hp
Auxiliary Rinse	1/5 Hp	1/5 Hp	1/5 Hp
Water consumption			
Gal. per hr. (max. use)	58	57	58
Temperatures °F			
Wash (min.)	160	150	150
Power Rinse (min.)*	N/A	160	160
Auxiliary Rinse (min.)	165	165	165
Final rinse (min.)	180	180	180
Heating			
Tank heat	Steam	Electric	
Wash tank	125 lbs./hr.	25 kW	
Wash tank (EUCCW4)	225 lbs./hr.	45 kW	
Rinse tank *	100 lbs./hr.	20 kW	
Auxiliary rinse	50 lbs./hr.	10 kW	
Electric booster (kW required for 40°F rise)	10	10	10
Electric booster (kW required for 70°F rise)	18	18	18
Steam booster (lbs./hr. required for 40°F rise)	50	50	50
Steam booster (lbs./hr. required for 70°F rise)	90	90	90
Venting			
Minimum CFM, load end			300
Minimum CFM, unload end			800

*EUCCW4 has no power rinse tank

Booster connections may vary. Contact the Factory.

Standard Voltages (Specify choice): 208/60/3, 240/60/3, and 480/60/3. Available in 3-phase only. For non-standard 3-phase voltages, contact the Factory.

Plumbing Notes Because of the variation in house-supplied water pressure, a water pressure regulating valve (PRV) is needed (water PRV is standard with a booster). Steam PRV's may be required for pressure higher than 30 psi. The PRVs can either be purchased from Champion or obtained locally.

Utilities EUCCW4

- Electrical Connection**
A Machine connection (see table A)
B Booster connection (see table A)
- Hot Water**
3/4" NPT 180°F hot water connection.
(For machine without built-in booster)
- Drain**
2" NPT connection, 62 gpm max flow rate
- Vents**
A Load end: 300 CFM 1/4" S.P.
B Unload end: 800 CFM 1/4" S.P. With blower-dryer, increase room ventilation by 600 CFM.

Utilities EUCCW6

- Electrical Connection**
Contact factory for specific machine electrical requirements
NOTE: Electric booster connection – contact Factory
- Hot Water**
3/4" NPT 180°F hot water connection.
(For machine without built-in booster)
- Drain**
2" NPT connection, 62 gpm max flow rate
- Vents**
A Load end: 300 CFM 1/4" S.P.
B Unload end: 800 CFM 1/4" S.P. With blower-dryer, increase room ventilation by 600 CFM.

Utilities EUCCW8

- Electrical Connection**
Contact factory for specific machine electrical requirements
NOTE: Electric booster connection – contact Factory
- Hot Water**
3/4" NPT 180°F hot water connection.
(For machine without built-in booster)
- Drain**
2" NPT connection, 62 gpm max flow rate
- Vents**
A Load end: 300 CFM 1/4" S.P.
B Unload end: 800 CFM 1/4" S.P. With blower-dryer, increase room ventilation by 600 CFM.

Warning Plumbing and electrical connections should be made by qualified personnel who will observe all the applicable plumbing, sanitary, safety codes and the National Electrical Code.

Note Water Hammer Arrestor (meeting ASSE-1010 standard or equivalent) to be supplied (by others) in common water supply line at service connection.

Venting Notes

Fabricated duct size: 3-7/8" x 23-7/8" (outside dimensions)

Due to an ongoing value analysis program at Champion, specifications contained in this catalog are subject to change without notice.

Champion Industries, Inc., 3765 Champion Boulevard, Winston-Salem, NC 27105 • 336/661-1556 • Fax: 336/661-1979 • www.championindustries.com
2674 N. Service Road, Jordan Station, Ontario, Canada L0R 1S0 • 905/562-4195 • Fax: 905/562-4618



EUCCW SERIES

Upright 29" Conveyor
Dual Rinse
Dishwashing Machine

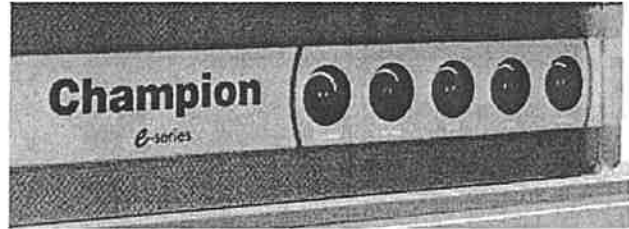
Champion®

The Dishwashing Machine Specialists

Control Panel



Digital Gauges

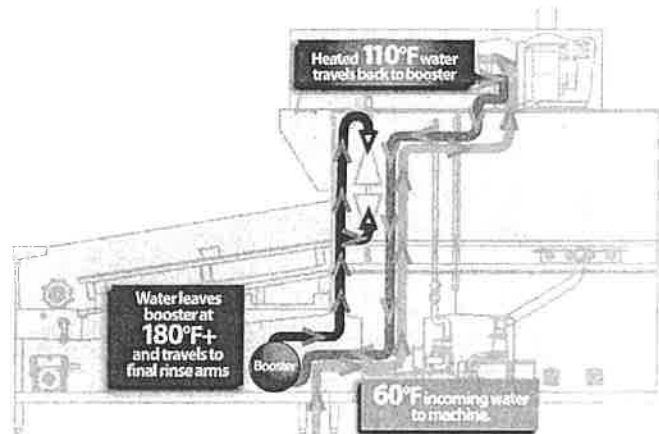


OPTIONS & ACCESSORIES

- ☐ Tank heat; choices of electric, steam coil or steam injectors
- ☐ Booster Heaters – stainless steel (completely inter-plumbed, controls are inter-wired)
 - ☐ Electric: (40°F rise or 70°F rise)
 - ☐ Steam: (40°F or 70°F rise)
- ☐ 48" Blower Dryer, electric or steam (add 4' to overall length)
- ☐ Belts: standard peg belt, flat belt, thermal tray belt, silverware belt, belts with upper cross rods, and other select combination belts
- ☐ Start/Stop station, unload end
- ☐ Back panels, stainless steel
- ☐ Cold water thermostat (for pre-wash)
- ☐ External scrap bucket on 48" pre-wash (standard on 30" pre-wash)
- ☐ External scrap bucket on wash tank
- ☐ Insulated hoods, lower panels
- ☐ Motor pumps, 2 or 3 Hp optional in lieu of 1 Hp on pre-wash
- ☐ Bumper rail, machine mounted
- ☐ Steam pressure regulating valve (unmounted)
- ☐ Drain water tempering kit (mounted)
- ☐ Insulated hinged door

Heat Recovery –

Redirects lost steam to heat using less energy.



- ☐ Shock arrestor (water)
- ☐ Drain interlocks
- ☐ Heat Recovery Unit redirects lost steam to heat using less energy
- ☐ **NEW** Champion ION scale prevention system

Due to an ongoing value analysis program at Champion, specifications contained in this catalog are subject to change without notice

Champion Industries, Inc., 3765 Champion Boulevard, Winston-Salem, NC 27105 • 336/661-1556 • Fax: 336/661-1979 • www.championindustries.com
2674 N. Service Road, Jordan Station, Ontario, Canada L0R 1S0 • 905/562-4195 • Fax: 905/562-4618

