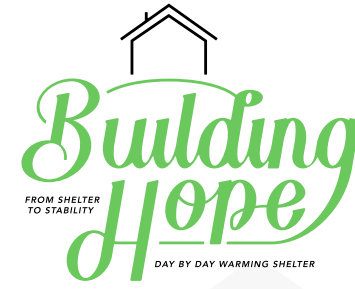


# Our Mission



Day by Day Shelter collaboratively provides temporary shelter, individualized services, and opportunities for self-sufficiency to empower the most vulnerable adults in our community.



Funds received through Winnebago County via the Wisconsin Department of Administration by the US Department of Treasury were used to construct the new 50 bed, 365 day shelter, located at 420 Ceape Ave., Oshkosh.

## Shelter Statistics

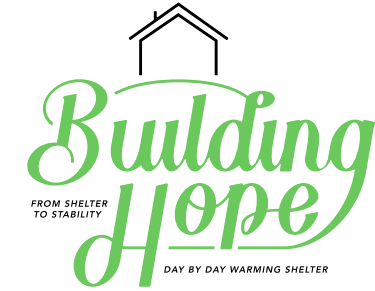


- Day by Day has served over **330 unique individuals in 2023**.
- Almost **20 percent** of those served in 2023 have been older adults, **over the age of 55**.
- Approximately **106 people served** this year at Day by Day experienced **homelessness for the first time**.
  - **22 people** served were **homeless veterans**.

*Since opening our doors at 420 Ceape Avenue, we expanded not only our capacity to serve the most vulnerable, but the new building has allowed us to enhance our programs and services, enabling us to reach more people and support their journey towards self-sufficiency.*

- **Day by Day guests employed** through the Guest Employment Program completed over **510 hours of work** in Shelter including janitorial, laundry, donation assistance and supply organization.
  - **Over 18 individuals secured housing** since July 1, 2023.
  - **50 individuals completed Rent Smart** classes since July 1, 2023.
- Day by Day completed **44 Health Assessments** since May 15, 2023, including **22 referrals for dental care and 27 referrals to the Winnebago County Aging and Disability Resource Center** for long term care and other community support.
- Additionally, **30 individuals received assistance setting up primary care, specialty and other healthcare needs, including pharmacy**. This assistance also includes calling healthcare providers, establishing care, follow-up visits, and setting up transportation to and from healthcare appointments.
  - **120 NEW volunteers** started volunteering at Day by Day since opening our new Shelter!
  - Almost **12,000 meals and over 700 gallons of milk** have been served since May 15, 2023!

# Challenges at Old Shelter

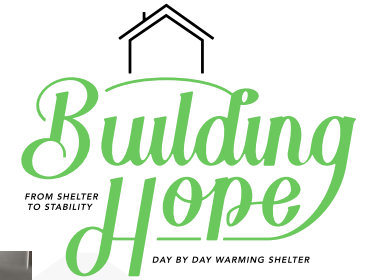


- Current guest capacity is 25 people per night- many are turned away.
- Overnight services limited to 6 months per year - temporary use permit due to building code.
- Guests lose contact with Day by Day staff during the summer months – many have to start over in the fall with working towards goals.
- Shelter lacks space for confidential conversations with guests, who are in crisis.
- Shelter is currently a two-story building – many guests are not able to navigate stairs.
- Mattresses are on the floor, making it difficult for many guests to get up and down from the floor.
- Day by Day has outgrown the space – donation storage is off-site, not enough washers and dryers, only two showers for all guests, men's bathroom only has one toilet, no space for clothing and hygiene items.
- Kitchen usage is limited. All cooking needs to be done off-site, and there is not room to store food, not enough refrigeration space, no warming units.
- The Shelter currently has limited safety and security.





# New Shelter Photos

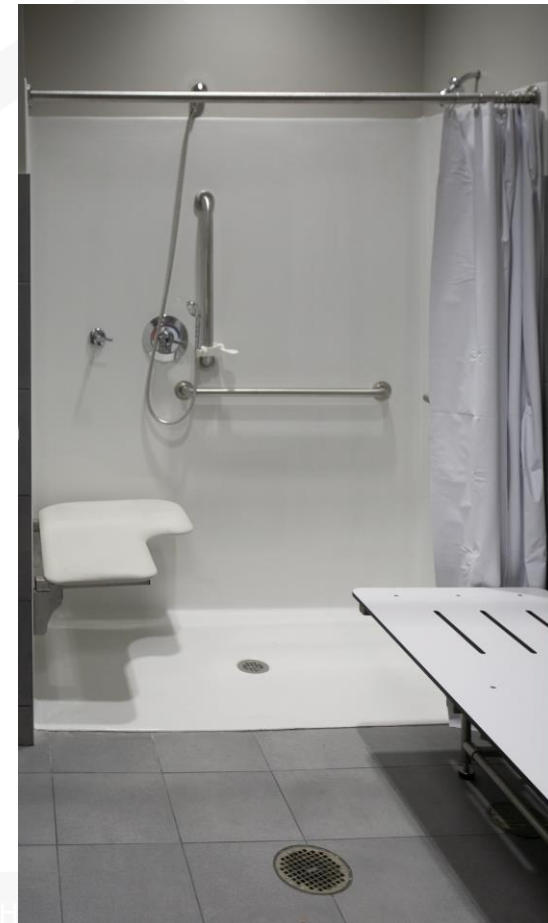




# New Shelter Photos

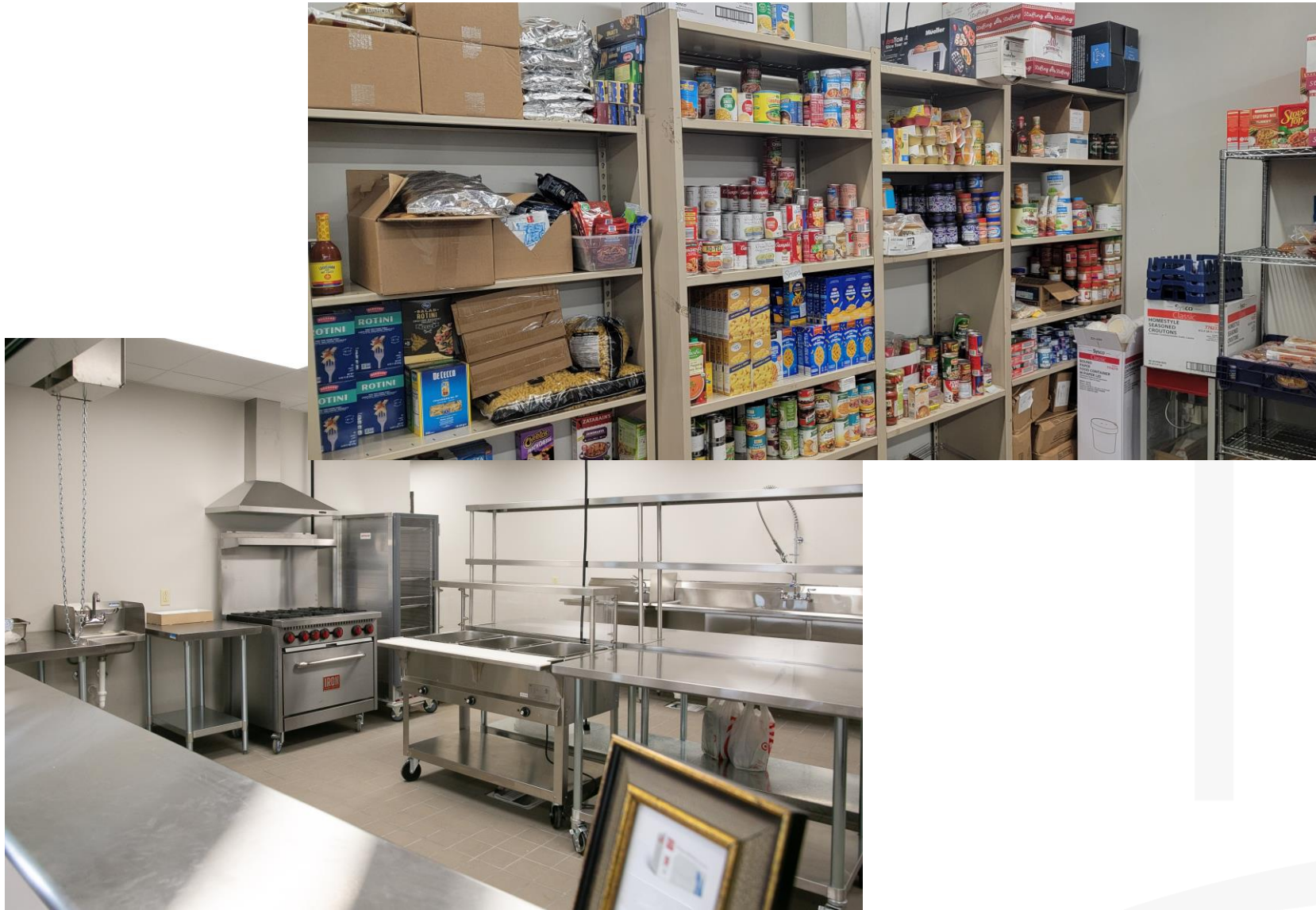


# New Shelter Photos





# New Shelter Photos



# New Shelter Photos





# New Shelter Photos



Thank You for Your Support



Questions???