

911 Dispatch Console Workstation Replacement

WINNEBAGO COUNTY SHERIFF'S OFFICE
2023 CIP

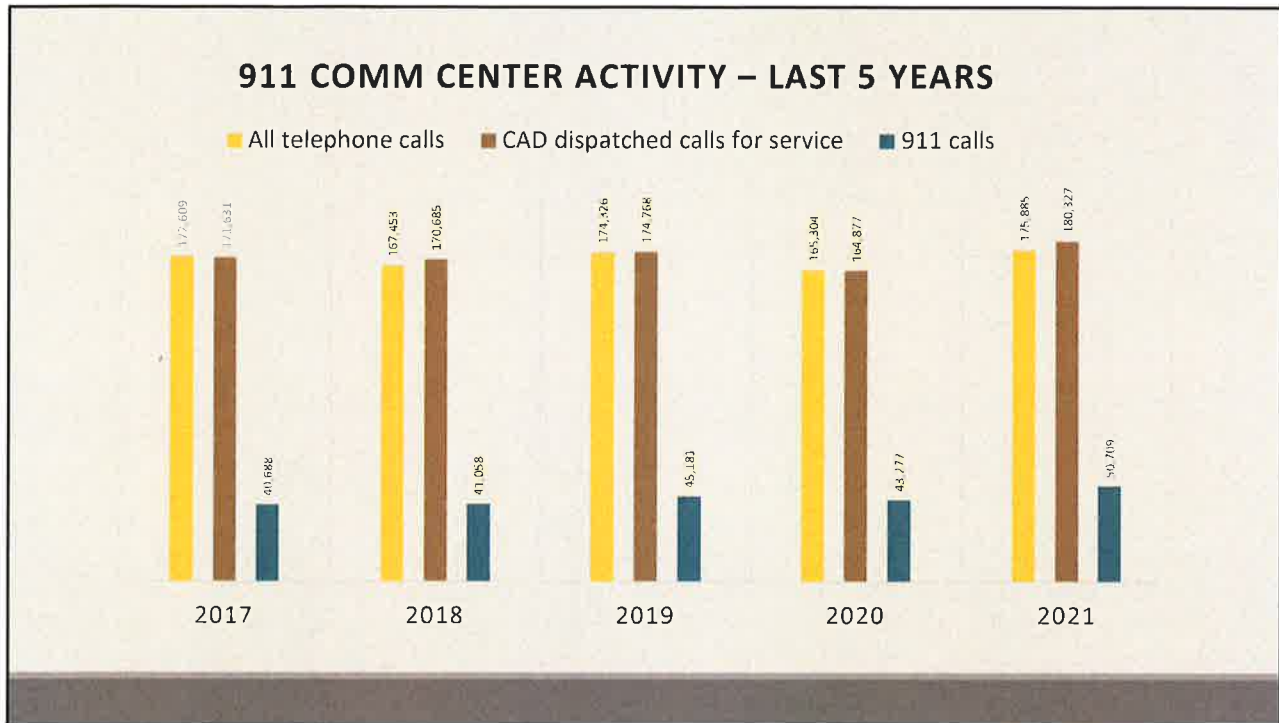
911 Comm Center - what we do

The 911 Comm Center is the **ONLY** 911 PSAP in the county (since inception in 1980)

Coordination and continuous monitoring of all public safety incidents and related radio talk-group traffic and phone calls within Winnebago County, 24/7/365.

Dispatches public safety resources and services for all law enforcement, fire, and emergency medical service providers within Winnebago County to include:

- 8 law enforcement agencies
- 19 fire departments
- 17 first responder groups
- 1 ambulance service



Communications System History

Federally mandated narrow banding of all radio systems was required by 2013.

In 2011-2012, Winnebago County:

- Invested \$5 million for radio infrastructure (800 MHz and P25 compliant Motorola Astro 25)

- Invested additional \$5.5 million on 1,500 subscriber unit radios for ALL public safety entities in the county.

2013-2020 – various component upgrades occurred

In 2021 - upgraded 4 Microwave links (\$330,000 CIP Project)

CIP 2023-2024 ~ \$2.5 million (Or ARPA??)- Subscriber Unit project for all County departments

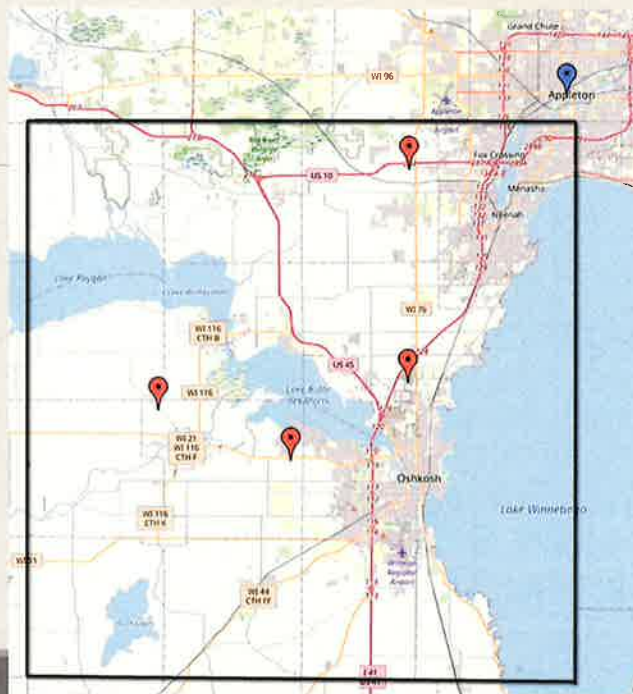
- Anticipated purchase of approximately 420 radios

Communications System History

- 2022 is Year 3 of a 10 year maintenance agreement for the Motorola Astro 25 radio system
- \$5.1 million in maintenance over 10 years
- Able to replace/repair/upgrade/update as needed

Microwave Tower Sites

*2021 CIP project upgraded links



Communications System History

- 2017 Winnebago County purchased:
- \$2.2 Million on Motorola P1 Suite – a records upgrade for all public safety entities in the county
 - Records Management System (RMS)
 - Computer Aided Dispatch (CAD)
 - Jail Management System (JMS)
- 2022 is year 4 of 10 year \$3.3 Million maintenance agreement with Motorola

Communications System History

- 2020-2021 CIP/WEM Grant funded NG-911 CPE Upgrade
 - \$225,000 project
- AT&T Viper 7 system upgrade to support the future of NG-911
- 911 system components upgrade at the 5 year mark
- 2022 is year 2 of a 5 year \$240,000 total maintenance agreement with AT&T and Intrado

Building History

Winnebago County Sheriff's Office building at 4311 Jackson St. opened in 2003

911 Comm Center designed as self-contained and with floor room for expansion

- Small kitchen and restrooms attached

- 9 total workstations (8 in primary Comm Center, and 1 in the adjacent EOC room)

Console Workstations must be ergonomic and suitable for 24/7/365 use

- Adjustable to fit 31 different employees

- NOT simple office furniture

To date, expansion has not been needed

Building History

Current console workstations were brand new with the building construction (2003)

In 2003 – with the new build -- we spent \$130,500 (average \$14,500 a position)

- “Cold” install – new construction – leisurely -- over time

Current consoles are obsolete

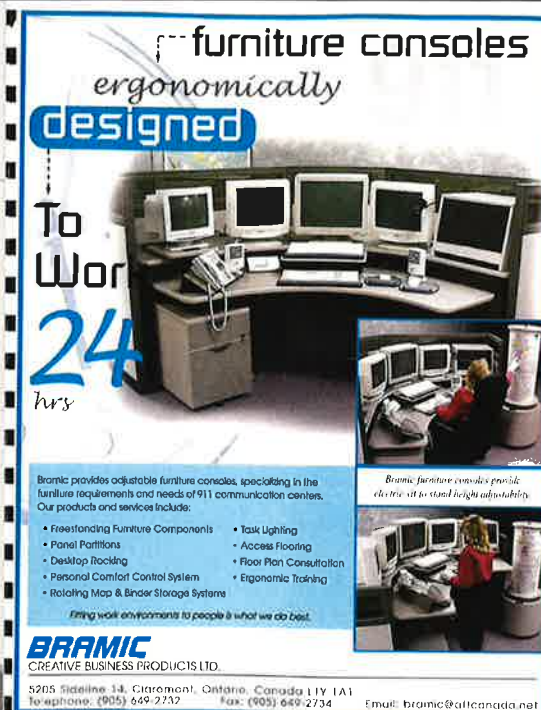
- 5 year warranty (expired 2008)

- 10-12 year life expectancy (2013-2015)

Building History

Console components were top of the line when purchased new in 2003

- As shown -- 4 monitors, 1 printer
- Deep setback



furniture consoles
ergonomically
designed

To Work
24
hrs

Bramic provides adjustable furniture consoles, specializing in the furniture requirements and needs of 911 communication centers. Our products and services include:

- Free-standing Furniture Components
- Panel Partitions
- Desktop Rocking
- Personal Comfort Control System
- Rotating Map & Binder Storage Systems
- Task Lighting
- Access Flooring
- Floor Plan Consultation
- Ergonomic Training

Bramic furniture consoles provide electric sit-to-stand height adjustability.

Fitting work environments to people is what we do best.

BRAMIC
CREATIVE BUSINESS PRODUCTS LTD.

5205 Sideline Rd. Glastonbury, Ontario, Canada L1Y 1A1
Telephone: (905) 649-2732 Fax: (905) 649-2734 Email: bramic@attcanada.net

What is a Dispatch Console Workstation?

Flat surface to support computer and monitor components

Ergonomic features - fully adjustable work surfaces that operate on a single plane

ADA compliant controls; foot rest, arm rest, etc.

ANSI/HFES 100-2007 - Human Factors Engineering Of Computer Workstations – lift, tilt, clearance, etc.

Task lighting, radiant heat, cooling

E911 Workstations

Must house very sensitive electronics and CPU units

Venting, electrical requirements, cabling housing

Today

Current consoles support 7 monitors (they want 8)



Today

Not as designed



Today

A few stations are not fully functional -- flat surface only



Today

Not office furniture – must house mission critical public safety components



Today

Not office furniture – must house mission critical public safety components



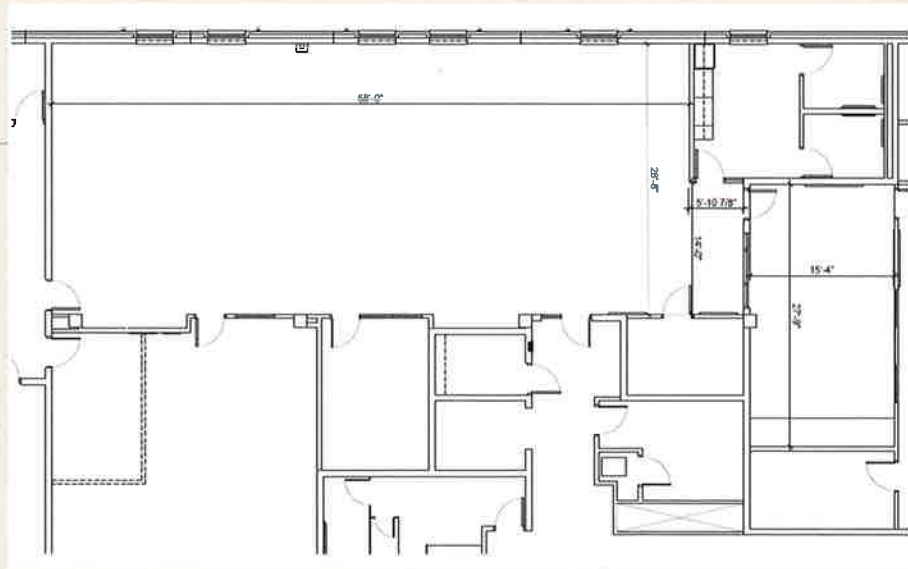
Fall 2022

All 9 stations must be replaced



Fall 2022

All 9 stations must be replaced



Now

Facilities members have been working wonders doing repairs for years....but it is time.

Rough estimate of \$28,000 per console workstation; plus disposal, removal, and discarding of old components; on a "Hot" install cycle (live PSAP)

CIP request is for \$260,000 (page 34 of the 2022-2026 CIP Book)

We will make every effort to repurpose or reuse stand alone components (file drawers, tables, etc.) within the agency, other county departments, or auction at public surplus, for those items with life left in them.

Questions???

- Captain Lara Vendola-Messer
- 920-236-7337
- lvendola@co.winnebago.wi.us