



Public Health
Prevent. Promote. Protect.

Winnebago County, WI

Winnebago County Public Health 2023 ANNUAL REPORT



Left column, from top to bottom: WCPH staff attend a training; a Public Health nurse shares information about Healthy Aging programming at an event; staff members help organize diapers collected for WCPH's diaper bank; staff smile for the camera at the Winnebago County employee appreciation event.

Rows from top to bottom, left to right: staff members accept books for WCPH's free children's book basket; a WIC staff member works with a child; a Wisconsin Well Woman Program Coordinator shares information at an event; WCPH staff gather for a photo at an all-staff meeting; Environmental Health staff performs inspections at a festival; WCPH staff dress up for highway safety day; staff members collect donated breast milk for WCPH's Milk Depot.

OUR ORGANIZATION

Winnebago County Public Health is a Level III local health agency, the highest level recognized by state statute. Public Health is comprised of six divisions: Administration, Communicable Disease, Community Health and Prevention, Environmental Health, Healthy Lifespan, and Women, Infants and Children (WIC).

MISSION

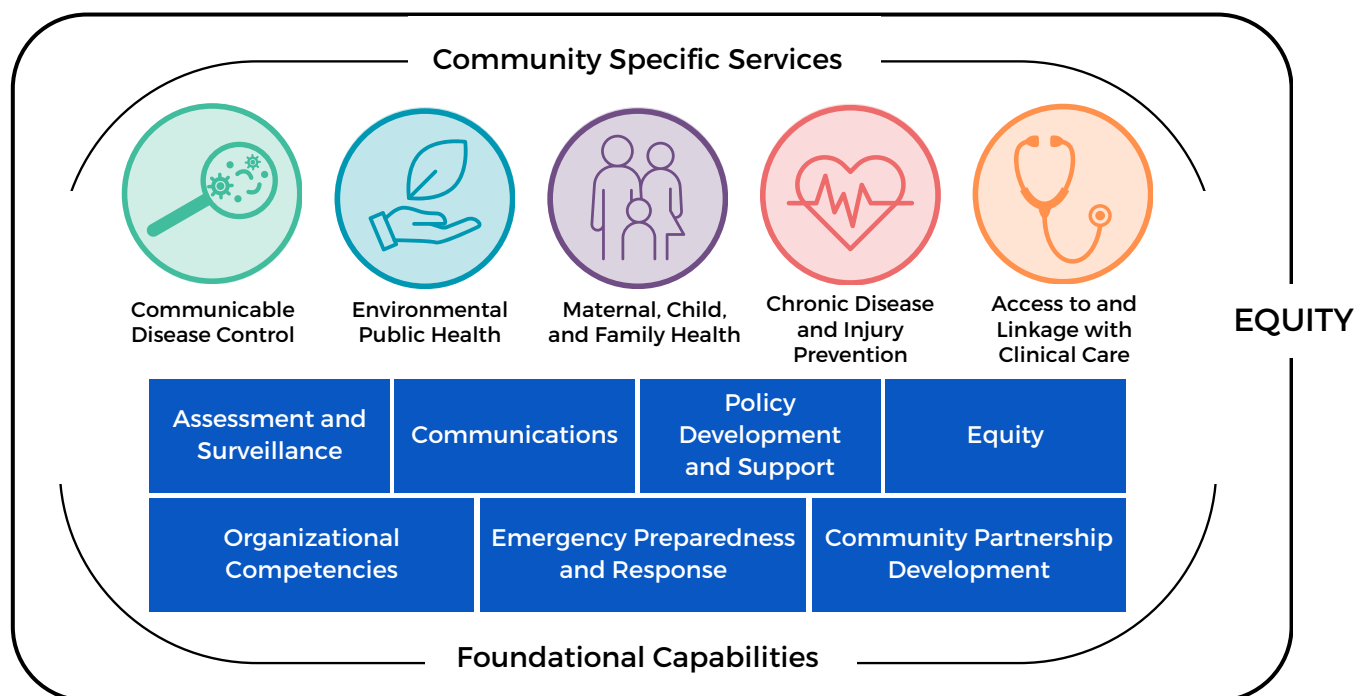
Winnebago County Public Health protects and promotes health through services, partnerships, and equitable practices and policies so all can live their best life.

VISION

Healthy people building thriving communities.

FOUNDATIONAL PUBLIC HEALTH SERVICES

Like public safety, public utilities, and other public infrastructure (roads, sewers), there is a foundational level of public health services (FPHS) that must exist everywhere for services to work anywhere. FPHS aim to strengthen our community by focusing on essential services that are vital to safeguarding our well-being. Through collaborative efforts and strategic partnerships, we work towards building a comprehensive framework that ensures equitable access to foundational public health services for all.



OUR ORGANIZATION



In 2023, Winnebago County Public Health had an average of 50 employees on staff.

Director/Health Officer:
Doug Gieryn



Division Supervisors:

Administration:
Julia Salomón

Communicable Disease:
Jaci Grignon

Community Health & Prevention:
Ashlee Rahmlow

Environmental Health:
Anne Boyce

Healthy Lifespan:
Alana Erickson

WIC:
Belinda DeGoey

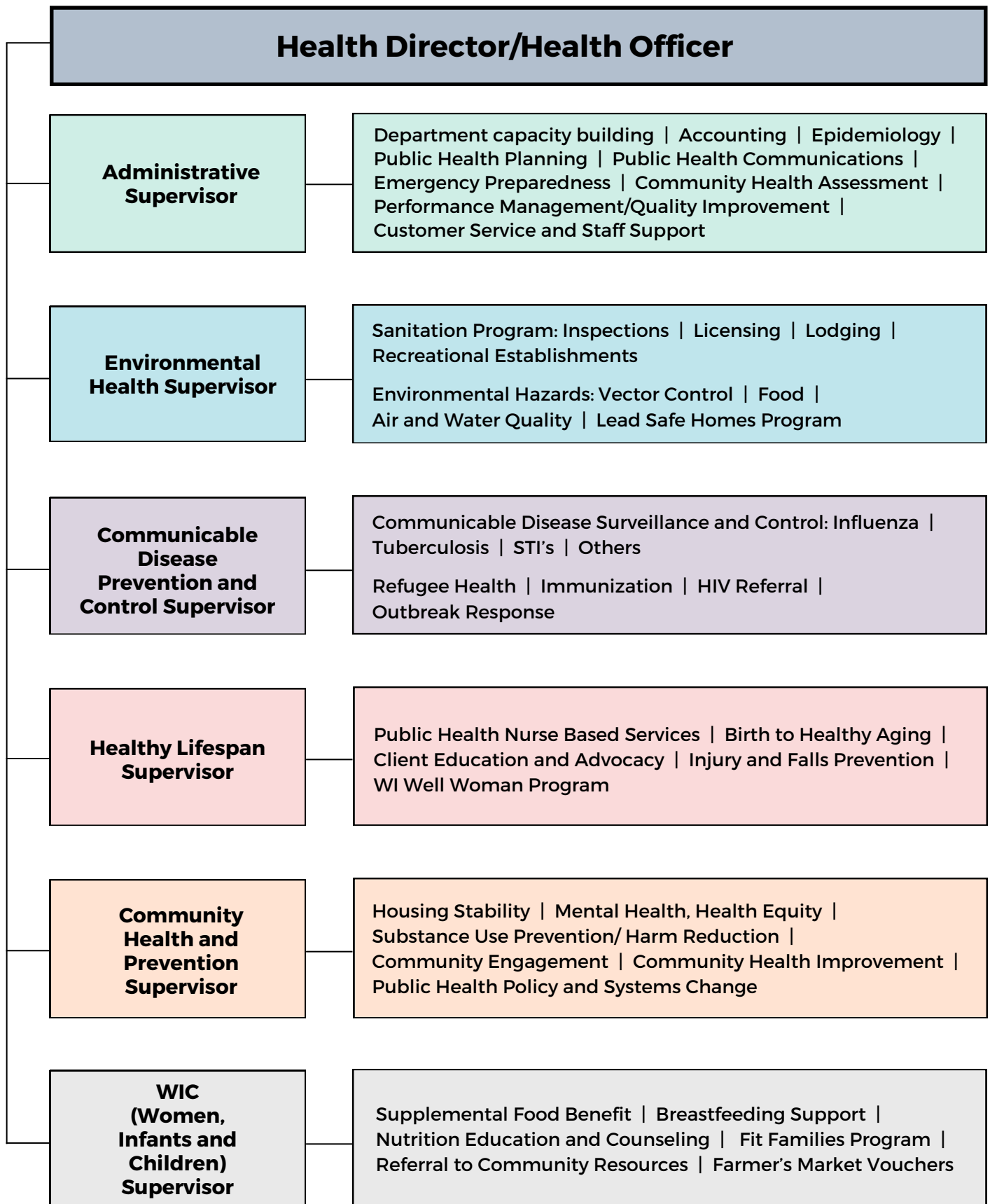
BOARD OF HEALTH

The Winnebago County Board of Health has nine members, appointed by the County Executive. Both County Board Supervisors and citizens serve on the Board of Health. The Board of Health serves as an advisory entity for the department and advocates for the provision of reasonable and necessary public health services.

From left: Toby Vanden Heuvel, Karen Powers, Katherine Horan, Ralph Harrison (Chair). Not pictured: Jeffrey Beem, Joshua Belville, Lois Gruetzmacher, Dr. Eric Smiltneek, Rachel Youngquist.



ORGANIZATIONAL CHART



2023 FINANCES

REVENUE

State/Federal
Grants & Contracts: \$2,619,067

Levy: \$1,842,793

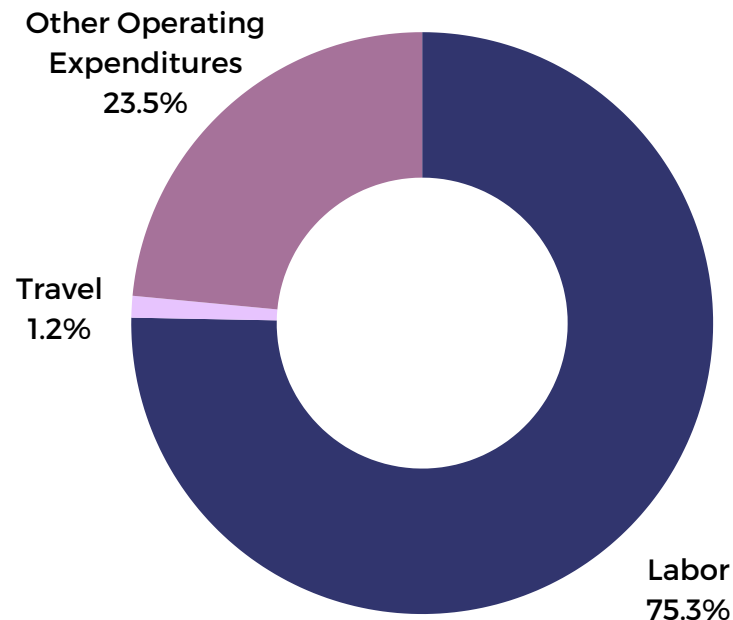
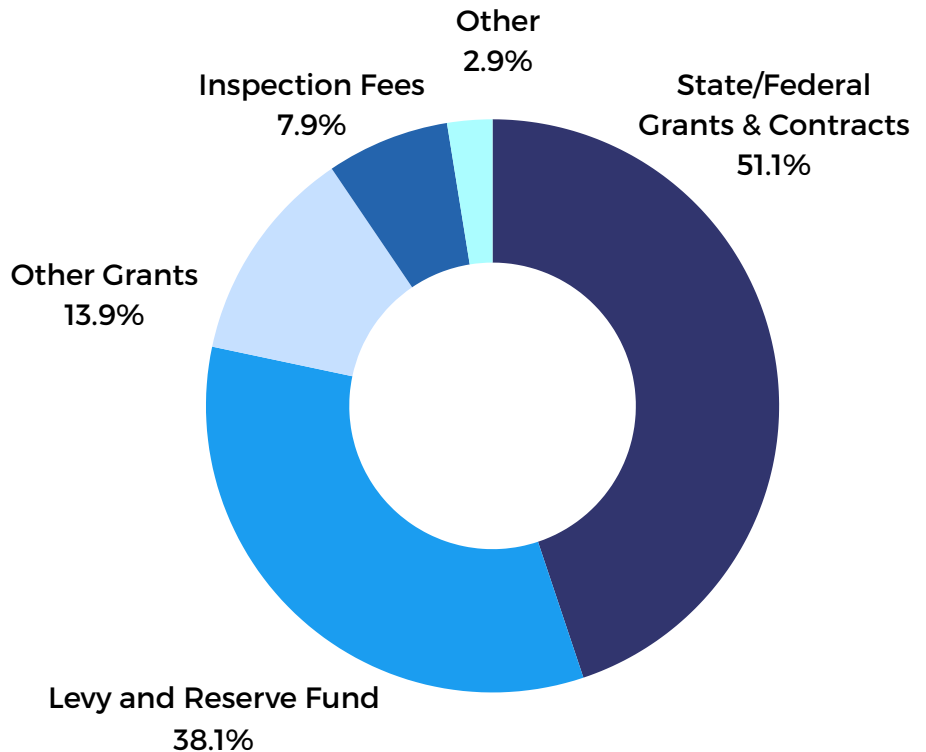
Reserve Fund: \$394,526

Other Grants: \$382,045

Services & Fees: \$463,916

Other: \$170,063

Total: \$5,872,410



EXPENSES

Labor: \$4,418,268

Travel: \$71,523

Other Operating Expenditures: \$1,382,619

Total: \$5,872,410



COMMUNITY HEALTH ASSESSMENT

Winnebago County Public Health is pleased to share the [2023 Winnebago County Community Health Assessment](#) (CHA). The CHA provides an overview of the community's health and is the basis for priority setting, program development, policy changes, and collaborative use of community assets. An advisory team, comprised of Winnebago County residents, was established as part of the CHA process. The team met regularly to identify data sources and indicators, lead focus groups, and provide insight and guidance about what to include in the final report.

To improve health, we must improve the systems and community conditions that impact health.

Scan Me! →
To read the CHA



Or go online:
wchd.pub/2023CHA

Data: The CHA includes both primary and secondary data. Primary data is data that WCPH collects from the community through focus groups and interviews. Secondary data is retrieved from other sources and contains information about Winnebago County, such as demographic details, income, housing, education, and health behaviors. Utilizing both primary and secondary data is necessary to develop a comprehensive understanding about the health status of the population.

What's next: The CHA is the basis for determining the community health priorities and developing a Community Health Improvement Plan. This will be released in 2024.

70% OF HEALTH OUTCOMES ARE DETERMINED BY COMMUNITY CONDITIONS

Economic stability is defined as having the resources needed to live a healthy life.

Neighborhood and built environment includes housing, transportation, and broadband services, as well as the natural environment.

Education access and quality refers to improved educational opportunities and helping children and adolescents do well in school.

Social and community context refers to the relationship people have with the places they live, work, and play. Strong community connections, including civic engagement and employment, are important for well-being.

Health care access and quality means access to comprehensive, high-quality health services.



ADMINISTRATION

The Administration Division provides support for all divisions in the health department and assists with department-wide administrative efforts. This division is comprised of Accounting, Administrative Support, Communications, Epidemiology, Preparedness staff, and Public Health Planning.



Accounting

- Assists the Health Director in all matters pertaining to the finances of WCPH.
- From budget preparation to the day-to-day financial requirements, these functions ensure proper financial sustainability for the department.

Administrative Support

- Ensures the community receives high-quality interactions when working with WCPH.
- Connects individuals to resources and staff from each division.
- This team helps keep Public Health running smoothly and effectively.

Communications

- Builds engaging and informative communication materials and works closely with the media.
 - In 2023, 10 press releases were shared with the media on a variety of public health topics.
- Strategically disseminates information to enhance the understanding of public health programs and services to the public.
- Develops department's online messaging.
 - In 2023, nearly **97,000 individuals were reached through Facebook.**
- Created a new monthly department newsletter-Health Department Happenings-featuring programs and services offered by Public Health, events, and more.
 - In 2023, **over 2,000 individuals were reached each month through the newsletter.**

Public Health
Prevent. Promote. Protect.
Winnebago County Health Department

HEALTH DEPARTMENT HAPPENINGS

Serving the communities of Winnebago County

September 2023

✓ **Be Aware, Be Prepared**

September is National Preparedness Month. It's important to have a plan in place for disasters such as severe weather, floods, power outages, and medical emergencies. By creating an emergency kit, setting aside savings for a rainy day, and staying up-to-date on health screenings, we can be better equipped to handle whatever life throws our way. So take this opportunity to reflect on readiness and make adjustments to ensure you are truly prepared. [Learn more on our website.](#)

| | | |
|--------------------------------------------------------------------------------------------------------------------------------------------------------------------------------------------------------------------------------------|------------------------------------------------------------------------------------------------------------------------------------------------------------------------|----------------------------------------------------------------------------------------------------------------------------------------------------------------------------------------------------------------------------------------------------|
| MAKE A KIT In the event of an emergency, it is crucial to have a well-stocked emergency preparedness kit on hand. This kit should contain all of the necessary items to keep you and your family safe during an emergency. | MAKE A PLAN Emergencies can happen at any time and without warning. It is important to have a plan in place to ensure the safety of you and your loved ones. | BE INFORMED One of the most important steps you can take towards preparedness is to stay informed. Knowing the potential risks and hazards in your area, as well as proper actions to take, can make all the difference in an emergency. |
|--------------------------------------------------------------------------------------------------------------------------------------------------------------------------------------------------------------------------------------|------------------------------------------------------------------------------------------------------------------------------------------------------------------------|----------------------------------------------------------------------------------------------------------------------------------------------------------------------------------------------------------------------------------------------------|

Help Fill Our Book Basket!

Reading to your child is not only a fun and enjoyable activity, it also helps improve their language and development.

We're looking for new and gently used books for children and teenagers to fill our Free Book Baskets. These books are available for anyone to take when they visit public health.

Book donations can be dropped off at either one of our public health offices during normal business hours:

- Oshkosh: 112 Otter Ave, Second Floor
- Neenah: 211 N. Commercial St, Second Floor

HELP US FILL OUR BASKET WITH BOOKS!

Drop off new or gently used children's books at our Oshkosh or Neenah health department location.

THANK YOU FOR YOUR DONATION!

"You're never too old, too wacky, too wild, to pick up a book and read to a child." — Dr. Seuss

Winnebago County Public Health will be closed Tuesday, September 12 for Staff Development.

PROGRAM FOCUS

Falls Risk Assessments

September is Falls Prevention Awareness Month, but falls happen all year round in Wisconsin.

- Among adults age 65 and older, **Wisconsin has the highest death rate due to falls in the nation.**
- One in four people in this age group will have a fall each year.
- Across the country, an older adult is treated in an emergency department for a fall every 11 seconds.

*"Falls can happen to anyone, but being aware of the risk factors can help prevent them."
Erin Roberts,
Public Health Nurse*

While falls are common, they're NOT a normal part of aging. Winnebago County Public Health offers **FREE in-home falls risk assessments** for individuals who are at risk of falling. And it is important to prevent falls from happening.

ADMINISTRATION

Epidemiology

- Identifies, collects, analyzes, and interprets data for staff and the community.
- Uses data visualization techniques to improve understanding of data for staff, community partners, and the public.
- Supports data needs and work across all divisions such as work related to the Community Health Assessment, Quarterly Communicable Disease Reports, and other data reports.
 - **In 2023, performance management dashboards were created for each division to highlight key indicators related to work happening throughout WCPH.**

Preparedness

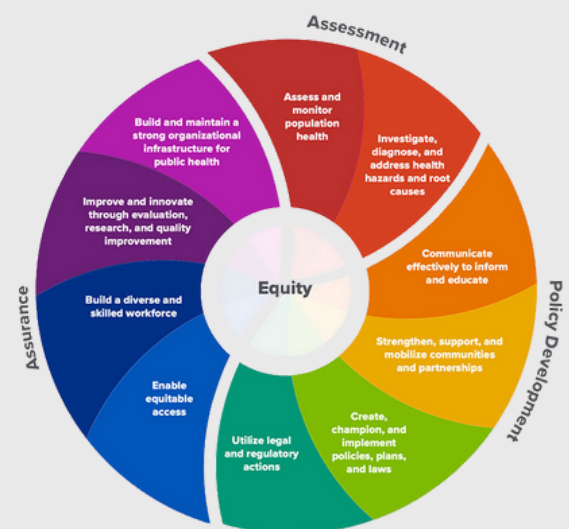
- Collaborates with other county departments and community partners to promote preparedness for all hazards and support emergency sheltering needs.
- Participates in local, regional, and state workgroups to help strengthen the community's readiness to respond to disasters and emergencies.
- Develops and implements emergency preparedness staff training.
 - **In 2023, 100% of staff completed the required Incident Command System trainings.**

Public Health Planner

- Leads or assists with public health plans such as the department's strategic plan, conducting the community health assessment, and the community health improvement plan.
- Works across divisions to advance performance management and quality improvement work.
- In 2023, workforce priorities based on staff responses from the Core Competencies for Public Health Professionals assessment were identified; experiential staff training, as part of the department's workforce development efforts were implemented.

The 10 Essential Public Health Services

- The Core Competencies for Public Health assessment identified a need to provide staff with in-depth information about the 10 Essential Public Health Services.
- These provide a framework for public health to protect and promote the health of all people in all communities.
- To achieve optimal health for all, the Essential Public Health Services actively promote policies, systems, and services that support opportunities for all to achieve good health.
- Seeks to remove obstacles and systemic and structural barriers, such as poverty, racism, and gender discrimination, that may contribute to health inequities.



COMMUNICABLE DISEASE

Communicable Disease (CD) staff play an important role in detecting, preventing and controlling illness in the community.

The Communicable Disease staff:

- Investigates all reportable communicable diseases.
- Monitors disease rates and trends.
- Implements strategies to prevent the spread of diseases in the county.
- Educates the public and healthcare professionals about communicable diseases and outbreak management.

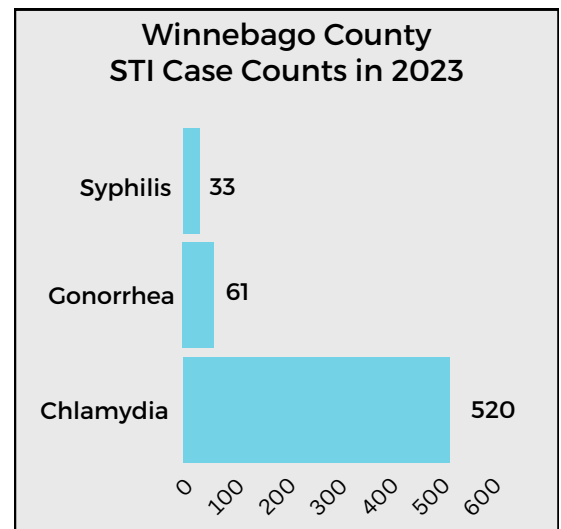
HIGHLIGHTS:

Sexually Transmitted Infections (STI)

- Confirmed STI cases in Wisconsin are reported to the local health department so staff can verify treatment and provide disease surveillance to prevent further spread.
- Reportable STIs in Winnebago County include Chlamydia, Gonorrhea, and Syphilis.
- Staff **Partnered with UW-Oshkosh** on campus and at school events to provide educational resources and testing **to reduce STIs**.
- Free condoms are provided at WCPH's offices.

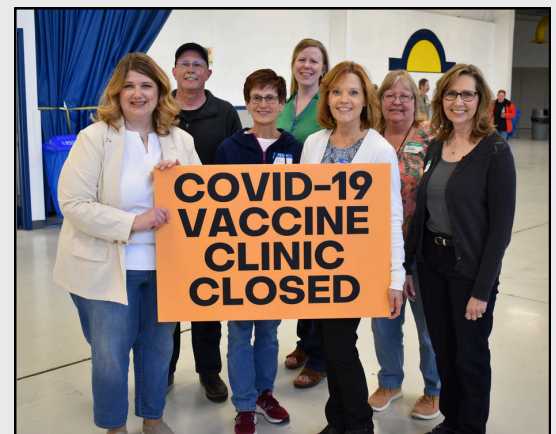
Influenza (Flu) Vaccine

- **240 flu vaccines were administered** to county staff.



COVID-19

- The COVID-19 public health emergency ended in 2023.
- Public Health testing and vaccination clinics concluded. WCPH staff continued providing COVID-19 vaccines to individuals in our office.
- WCPH provided free at-home test kits for public use for distribution at local community organizations.
- CD staff provided support to long-term facilities managing COVID-19 outbreaks.
- WCPH staff and partners provided over 100,000 COVID-19 tests at various community locations and over 30,000 vaccine doses were given during the entire pandemic.



COMMUNICABLE DISEASE

Tuberculosis (TB)


- CD staff followed up with those at risk for TB and treated people with latent and active TB disease to reduce rates of spread and infection.
 - In 2023 staff **monitored 57 latent TB infections (LTBI)**.
- LTBI treatment requires public health staff to provide daily observation and therapy for at least three months.

Communicable Disease Reports

- Provide timely data to the community and healthcare partners about prevalent diseases in Winnebago County.
- Tracking **this data helps detect, prevent, and control illness** and community outbreaks, keeping the community safe.

School Surveillance Reports

- Staff partnered with area schools to collect and assess student illness data to detect outbreaks early and reduce the spread of communicable diseases in schools.
- The number of students absent due to influenza-like illness, gastrointestinal illness, or other illnesses is reported to WCPH. This information **is reviewed daily and communicated to schools**.
- Schools receive guidance from WCPH staff on control measures to help decrease the spread of disease throughout the school and community.



COMMUNICABLE DISEASE UPDATE

Quarterly Report

Fourth Quarter 2023

| Reportable Diseases | WCPH* Q4 Cases | | WI Q4 Cases | |
|------------------------------|----------------|-------|-------------|--------|
| | 2023 | 2022 | 2023 | 2022 |
| STIs | | | | |
| Chlamydia | 159 | 117 | 5,886 | 6,096 |
| Gonorrhea | 15 | 23 | 1,793 | 1,876 |
| Syphilis | 7 | 3 | 345 | 593 |
| Vaccine Preventable Diseases | | | | |
| Step A | 0 | 0 | 0 | 0 |
| Step B | 1 | 2 | 93 | 109 |
| Mumps | 0 | 0 | 3 | 3 |
| Pertussis | 1 | 0 | 25 | 5 |
| Varicella | 0 | 2 | 55 | 56 |
| Respiratory | | | | |
| COVID-19 | 1,436 | 2,712 | 45,036 | 93,062 |
| Influenza (all) | 36 | 223 | 6,490 | 12,143 |
| Invasive Strept A | 0 | 2 | 82 | 111 |
| Invasive Strept B | 3 | 1 | 154 | 153 |
| TB (all) | 0 | 0 | 11 | 13 |
| TB Infection (LTBI) | 10 | 3 | 206 | 263 |
| GI Diseases | | | | |
| Campylobacteriosis | 4 | 9 | 341 | 318 |
| Shiga Toxin-producing E Coli | 4 | 1 | 93 | 83 |
| Giardia | 2 | 3 | 137 | 85 |
| Hepatitis C | 2 | 4 | 278 | 360 |
| Salmonellosis | 3 | 6 | 216 | 185 |
| Shigellae | 0 | 1 | 19 | 19 |
| Yersinia | 2 | 3 | 29 | 29 |

Reportable Diseases
A selection of common reportable disease are showcased in the table and in the [one-page report](#). A more extensive list of diseases as well as additional details regarding the below spotlight items can be found in the [full-length report](#).

Spotlight: RSV
-The Wisconsin Department of Health Services (DHS) [uses a contract](#) Wisconsin to get the [RSV vaccine](#) to protect their baby from the virus. -As of January 10 there have been 1,402 people in Wisconsin hospitalized with RSV this season, 590 of those are children under age 2.

Spotlight: MRSA Bacteremia Cluster
-The Wisconsin Department of Health Services (DHS) is currently investigating three [Methicillin-Resistant Staphylococcus aureus \(MRSA\) bacteremia](#) cases associated with joint injection procedures in Wisconsin. Call for cases: Please notify the Wisconsin HAI Prevention Program by [email](#) or phone (608-267-7711) if you have identified:

- Patients presenting with pain, swelling, difficulty ambulating, or other signs of infection post joint injection procedure.
- Joint injection procedures requiring irrigation and debridement post procedure.
- Positive sepsis and/or MRSA bacteremia cultures post joint injection procedure.

Spotlight: Urgent Need to Increase Immunization Coverage for Influenza, COVID-19, and RSV
-Health care [providers should administer influenza, COVID-19 and RSV immunizations](#) now to patients, if recommended. Health care providers should recommend antiviral medications for influenza and COVID-19 for all eligible patients, especially patients at high-risk of progression to severe disease such as older adults and people with certain underlying medical conditions.

Helpful links:
[Reportable Diseases in Wisconsin DHS link](#)
[Winnebago County Public Health](#)
[CDC - www.cdc.gov](#)
[Previous WCPH Quarterly Reports](#)

Questions? Contact Winnebago County Public Health at 920-232-3000 or WCHD.CD@winnebagocountywi.gov

Scan Me! →

To review CD Reports

Or go online: wchd.pub/cdreports



Childhood & Adolescent Vaccines

- Vaccine clinics resumed at WCPH after being paused due to the COVID-19 pandemic.
- Free vaccines are provided for children under age 19 who qualify under the Wisconsin Vaccines for Children Program, ensuring all children have a better chance of receiving their recommended vaccinations.
- These vaccines protect babies, young children, and adolescents from 16 diseases.
- In 2023, WCPH staff administered **433 vaccine doses** under the Vaccines for Children Program.



Childhood & Adolescent Vaccines

Give your children the **best shot** against illness. Don't wait, **vaccinate**.

Vaccines are FREE for eligible children:

- No Insurance
- Underinsured (a child who has health insurance, but the coverage does not include all vaccines)
- Medical Assistance (includes Badger Care)
- Native American or Native Alaskan

- Tdap
- MMR
- HPV
- Rotavirus
- And more!

SCAN ME! for a full list of vaccines and additional information. Or visit www.wchd.pub/VFC



Call for more information
920-232-3000

COMMUNITY HEALTH AND PREVENTION

The mission of the Community Health and Prevention division is to work with residents and partners on systems and policy change to improve community health.

Goals:

1. Laws and policies are inclusive and institutions are effective, accessible, and accountable.
2. People are empowered to be involved in the decisions that impact their lives and health.
3. Hear from our community and share data that is accessible and available to the community.

The Community Health and Prevention Division strives to center authentic community engagement and health equity in all areas of our work.



What is Community Engagement?

The practice of using multiple strategies to provide opportunities for all Winnebago County residents - particularly those historically excluded, under-represented, or under-resourced - to own the change they want to see and be involved in communication, problem-solving, governance, and decision-making.



What is Health Equity?

Community conditions in which everyone can participate, prosper, and reach their full potential, especially in matters affecting their health.

HIGHLIGHTS:

Harm Reduction

- Provided education about the presence of Fentanyl in the community.
- Created a Xylazine informational brochure that was distributed through many organizations.
- **Added Xylazine test strips and HIV/HCV testing** to the harm reduction services offered at the health department.

Clients that utilized the Harm Reduction Program reported they used Narcan to save **201 lives** in 2023.



Breakwater is a community coalition supported by Winnebago County Public Health. Breakwater's mission is to prevent and reduce youth and adult substance use in

Winnebago County. Breakwater welcomed a new coordinator in 2023 and partnered with Jake White at Vive 18 in preparation for youth engagement opportunities in 2024.

COMMUNITY HEALTH AND PREVENTION

Community Data Gathering and Reports

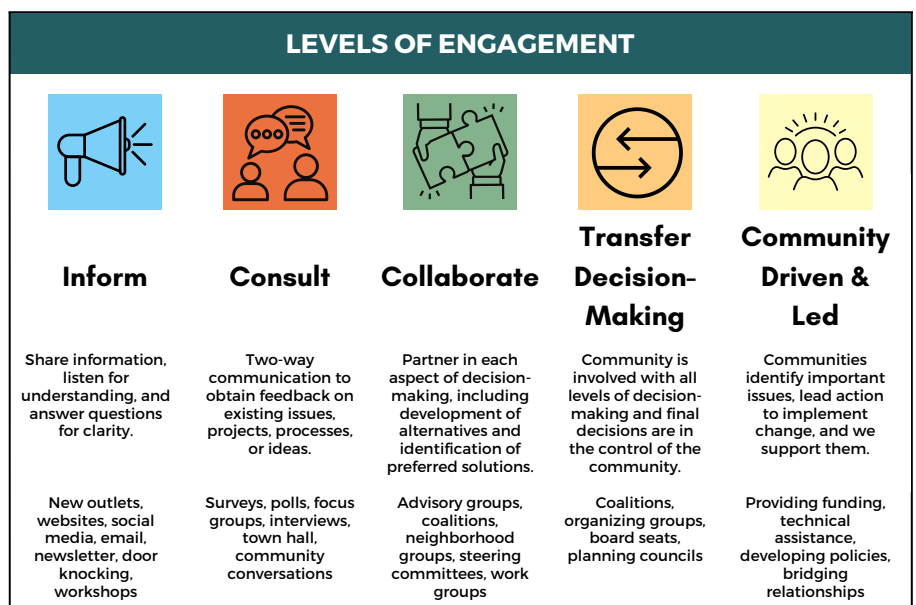
- Partnered with Solutions Recovery, Inc. to hear from parents in recovery about their barriers, needs, and experiences. The report **Connection & Belonging: Parents in Recovery** highlights results from the listening sessions.
- Developed an inter-departmental team within the county to gain understanding of experiences and needs of employees related to family and medical leave.
- Partnered with UW-Oshkosh to conduct qualitative data research and analysis to understand the impact of free busing for K-12 students in Oshkosh and released an **Evaluation of the GO Transit City Bus Program for K-12 Students in Oshkosh**.
- Worked alongside a tri-county team to analyze **Mind Your Wellness Data** and create community recommendations for the report.

Utilization of Grant Funds for Community-Identified Needs

- Supported the work of People of Progression to increase supportive Mental Health and Substance Use care to Black men and women, youth, and those whom identify as LGBTQ+.
- Supported the continuation of childcare at Solutions Recovery, Inc. during recovery meetings.
- Contracted Vivent Health to learn from people accessing harm reduction how they can be better served by public health.
- Increased supportive services available following a traumatic death by contracting Fox Cities Victim Crisis Response to expand services throughout all of Winnebago County.

Presentation Spotlight:

- **WPHA 2023 Annual Conference:** Engaging Communities in Harm Reduction Philosophy and Practice
- **WI Women's Network Policy Institute:** Equitable Policy Analysis & Power Mapping
- **FREE Summit 2023:** Breaking Every Chain plenary
- **WI DOC Probation and Parole Regional Meeting:** Casa Hispana Community Resources
- **Public Health in Practice 2023:** Tools & Timelines: Working Across Departments and Sectors to Build Health
- **Home For Everyone:** Local Housing Issues & Policy Panel



Adapted from International Association of Public Participation's Spectrum of Participation: https://cdn.ymaws.com/www.iap2.org/resource/resmgr/pillars/Spectrum_8.5x11_Print.pdf

ENVIRONMENTAL HEALTH

The Environmental Health (EH) division provides inspections, consultations and education to prevent and minimize the harmful environmental exposures from food, air, water, housing, places of work, toxic materials, vector control, nuisances and human health hazards.

HIGHLIGHTS:

Sanitarian Inspections

- Sanitarian inspections and licensing of establishments prevent communicable diseases and foodborne illnesses from affecting residents and visitors.
- In 2023, staff conducted a total of **1,037 inspections**:
 - Mobile Home Communities: 10
 - Food Establishments: 828
 - Body Art Establishments: 19
 - Lodging: 87
 - Campgrounds: 28
 - Pools: 65

Transient Non-Community Water

- **Tested 128 transient non-community water systems.** One tested positive for unsafe bacterial levels requiring seven additional samples. Subsequent chlorination treatment was recommended.
 - Transient non-community refers to water systems that provide water to 25 or more people for at least 60 days/year, but not to the same people and not regularly (for example gas stations, and campgrounds).

Safe Medication Disposal

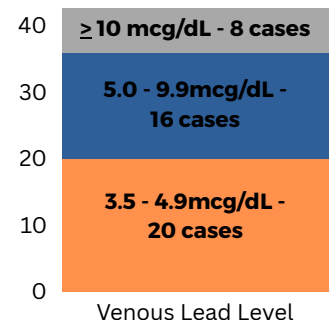
- There are four locations in Winnebago County where residents can drop off unwanted medication to be properly disposed of to prevent accidental poisoning, prescription drug misuse, and environmental hazards.
- Staff assisted with sorting and **disposing of over 800 pounds of medication** from the Oshkosh location.

Lead Consultation & Assessment

- **44 cases of elevated blood levels in children under 6 years of age in Winnebago County were reported.**
- A blood lead reference value of 3.5 mcg/dL or greater is considered higher than most children. All cases received consultation from a public health nurse and a home visit.
- Environmental assessments were done at 8 homes where children had levels at or greater than 10 mcg/dL.



High levels of lead were reported in 44 children in Winnebago County.



ENVIRONMENTAL HEALTH

Lead-Safe Homes Program

- The Lead-Safe Homes Program helps coordinate and pay for the safe removal of lead hazards from homes and rental properties in Winnebago County to help prevent childhood lead poisoning.
- Exposure to lead damages the brain, body, and nervous system; children under 6 are at greatest risk for harm.
- Utilized state and federal funding to make **10 homes lead safe** for occupants.



Carbon Monoxide

- In Wisconsin, an average of 500 people are sent to the emergency department yearly due to carbon monoxide poisoning.
- When blood test results show an elevated Carboxyhemoglobin (COHb) level at or above 5%, our staff conducts follow-up interviews to determine the cause.
- **9 cases required follow-up investigations.**

Animal Bite Investigations

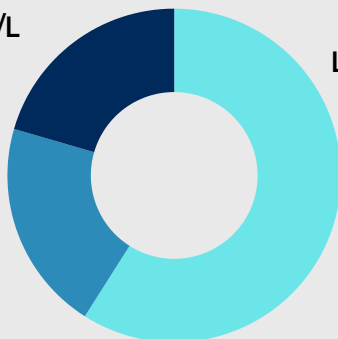
- Staff worked with law enforcement, veterinarians, physicians, and state officials to investigate and provide guidance when a person or animal may have been exposed to rabies.
- Staff investigated **173 animal bites**, in 2023, mostly from dogs and cats.
- Seven bats were submitted, for rabies testing, to the Wisconsin State Lab of Hygiene.
 - Two tested positive for rabies; one involved a cat, subsequently quarantined, and another involved an individual who received treatment.

Radon Testing

- Radon is a cancer-causing, radioactive gas that comes from the natural breakdown of uranium in soil, rock, and water. Routine radon testing is recommended in Winnebago County due to higher-than-average gas levels in the soil.
- **358 radon kits were sold to customers.**
- The EPA recommends fixing homes with levels above 4.0 pCi/L:
 - Levels between 4.1 to 8.0 pCi/L: Perform an additional long-term radon test.
 - Levels greater than 8.0 pCi/L: Consult a professional for a radon-reduction system.
- High radon levels (over 4 pCi/L) were reported in 41% of homes tested in the county.

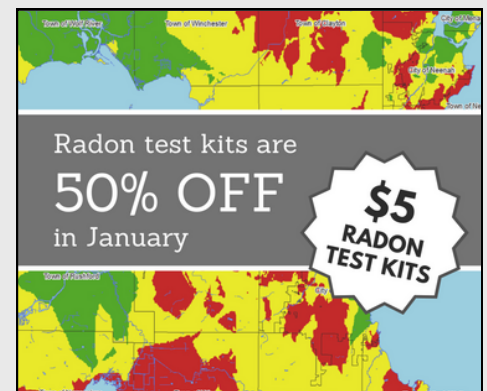
268 Homes were Tested for Radon in Winnebago County.

Greater than 8.0 pCi/L
20.5%
55 homes



Less than 4.1 pCi/L
59.0%
158 homes

4.1 to 8.0 pCi/L
20.5%
55 homes



HEALTHY LIFESPAN



The Healthy Lifespan (HLS) division promotes health throughout all stages of life by providing health education and advocacy, community engagement, and coalition work. Focus areas include injury prevention maternal and child health, aging adult services, and improving health access. Staff are also contracted by Winnebago County/Oshkosh Housing Authority to provide services to residents in subsidized housing to help them remain in their independent living residence as long as possible.

HIGHLIGHTS:

Dream Up! Grant

- The Dream Up! grant program addresses childcare challenges and barriers that prevent access for local families to quality childcare in Winnebago County.
- WCPH, in collaboration with additional community organizations, provided guidance on how to best support childcare providers with the **\$75,000 grant**.
- Through strategic planning **over 100 new childcare spots were created**.

Parent Resource Hours

- Parent Resource Hours allowed HLS staff to bring back prenatal and postpartum services previously disrupted during COVID.
- Through grant funding, staff provided “catch-up” services to families struggling to find basic needs.
- **By bundling services provided, families accessed more of what they needed in one visit** rather than multiple trips.
- Services include developmental screenings, child passenger safety, sleep safety, nursing expertise, breastfeeding support, vaccines, lead poisoning prevention, and support navigating community resources:
 - Active Clients: 542
 - Car Seats Provided: 123
 - Packs of Diapers Provided: 3,249
 - 81,225 diapers (25 diapers/pack)
 - Cribs Provided: 17



Parent Resource Hours



Have kids? Have questions? We're here to help!



Developmental Screenings: Our staff can help with childhood screenings that look at milestones in playing, speaking, behaving, and moving.



Lead Screening:* Learn how to prevent lead poisoning and get your child screened for lead exposure.



Nursing Expertise: Our nurses can support you to give your baby the highest level of care!



Vaccines:* Protect your child with routine vaccines from public health.



Breastfeeding: Get one-on-one support with our lactation specialist.



Car Seat Checks:* Learn the correct way to install a car seat and keep your child safe.



Safe Sleep: Learn how to create a safe sleep environment for your child.



Health and Community Resources: Learn about programs like prenatal health care, WIC, and Head Start.

EVERY 2ND TUESDAY
1-4 PM
OSHKOSH
112 Otter Ave

EVERY 4TH THURSDAY
11 AM-2 PM
NEENAH
211 Commercial St



*Appointment needed for car seat checks, lead screening, and vaccines. Scan or call to schedule.

**Drop in any time during Parent Resource Hours!
All are welcome. Services are FREE!**

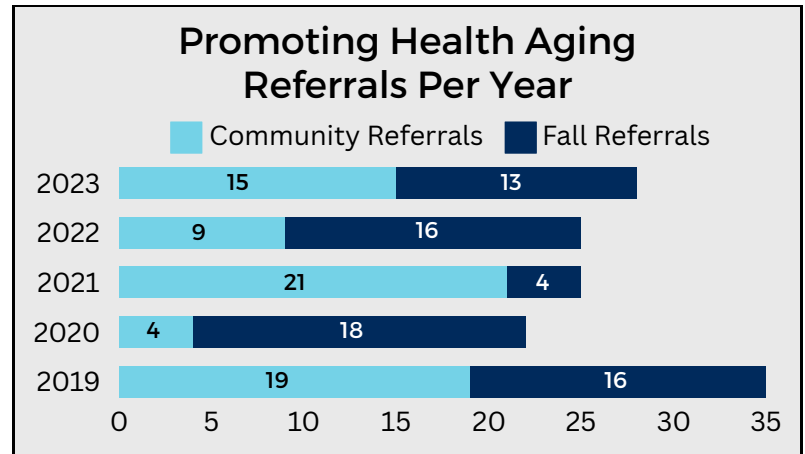
920-232-3000 / health@winnebagocountywi.gov
WWW.WINNEBAGOPUBLICHEALTH.ORG

Updated 11/23

HEALTHY LIFESPAN

Promoting Healthy Aging

- HLS was able to resume a variety of **in person outreach including in-home visits and social connectedness events.**
- Data provided from partnerships, including referrals, helped drive and form strategies to help individuals be independent in their homes.



Wellness Plus

- **536 participants attended Wellness Plus classes.**
- Wellness Plus classes are designed to help participants be active, manage chronic conditions and prevent falls. All classes are researched and proven to help participants self-manage their health.

Diaper Bank

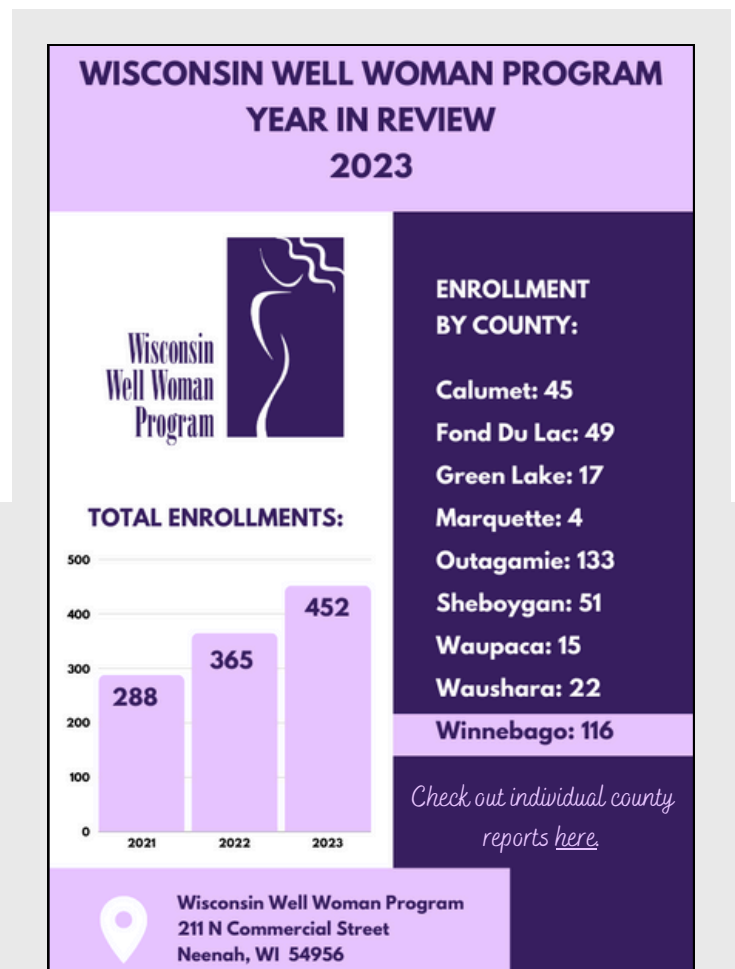
- HLS distributed **free diapers to 843 children** in Winnebago County through a partnership with Jake's Diapers and Fox Cities Diaper Bank. Feminine care products were also provided as needed.

Milk Depot

- **HLS collected over 24,000 ounces of donor milk from 27 donors.**
- Partnered with the Mothers' Milk Bank of the Western Great Lakes to distribute pasteurized donor human milk to premature, critically ill and chronically ill babies.

Wisconsin Well Woman Program (WWWP)

- **Staff improved processes and partner communications** resulting in an increase in enrollment.
- WCPH coordinated the program for nine counties.
- WWWP provides breast and cervical cancer screenings to individuals with little or no health insurance.
- This program serves many rural and Spanish-speaking residents.



WOMEN, INFANTS AND CHILDREN

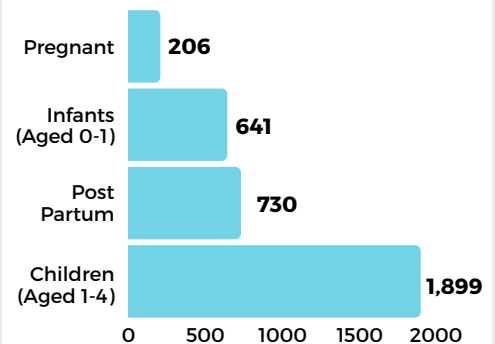
WIC is a supplemental nutrition program for children younger than age five and people who are pregnant, breastfeeding or postpartum. WIC provides nutrition education, breastfeeding support, supplemental nutritious foods and connections to other community services. WIC operates within the Winnebago County Public Health offices in Oshkosh and Neenah.

HIGHLIGHTS:

- After providing all services virtually due to the COVID-19 pandemic, WIC resumed seeing clients in person again, providing a flexible, hybrid option for appointments.
- In 2023, WIC participants **redeemed benefits worth over \$1.7 million** within Winnebago County at local retailers.
- WIC participants in Winnebago County redeemed **\$19,938 Farmers Market Nutrition Program vouchers** at local markets.
- **45 families** from Winnebago County were enrolled in Fit Families, a program for two- to four-year-olds that empowers families to adopt healthy eating and physical activity behaviors.



In 2023 we served 3,476 WIC Participants



WIC Supports Breastfeeding Mothers

On-staff breastfeeding specialists, peer counseling, breastfeeding classes and supplies, and referrals to breastfeeding specialists in the community are some of the ways mothers receive one-on-one support from WIC staff.

- WIC peer counselors are parents with personal experience in breastfeeding and who have received specific training in lactation and breastfeeding support. They share their own experiences and provide help and advice based on current research to parents.
- In 2023, 77.2% of WIC mothers tried breastfeeding and 68.3% of WIC mothers were still breastfeeding their 3-month-old infant.



STAY IN TOUCH

OUR OFFICES

Oshkosh

David W. Albrecht Administrative Building
112 Otter Avenue, PO Box 2808
Oshkosh, WI 54903-2808
920-232-3000

Neenah

Winnebago County Human Services
211 N Commercial Street
Neenah, WI 54956
920-727-2894

SUBSCRIBE TO OUR UPDATES & NEWSLETTERS

Get updates on services and programs provided by Winnebago County Public Health delivered to your inbox! We send out a monthly newsletter, quarterly Communicable Disease Report, and periodic press releases. Visit wchd.pub/newsletter or scan the QR code to the right.



**SUBSCRIBE
TO UPDATES!**

Visit wchd.pub/publichealthhappenings or scan the QR code to the right to see our current and previous monthly newsletter, Public Health Happenings.



**VIEW OUR
NEWSLETTER!**

FOLLOW US ON SOCIAL MEDIA



facebook.com/WinnebagoHealth



twitter.com/WinnebagoHealth



youtube.com/@winnebagohealth



Public Health
Prevent. Promote. Protect.

Winnebago County, WI

www.winnebagoountywi.gov/health