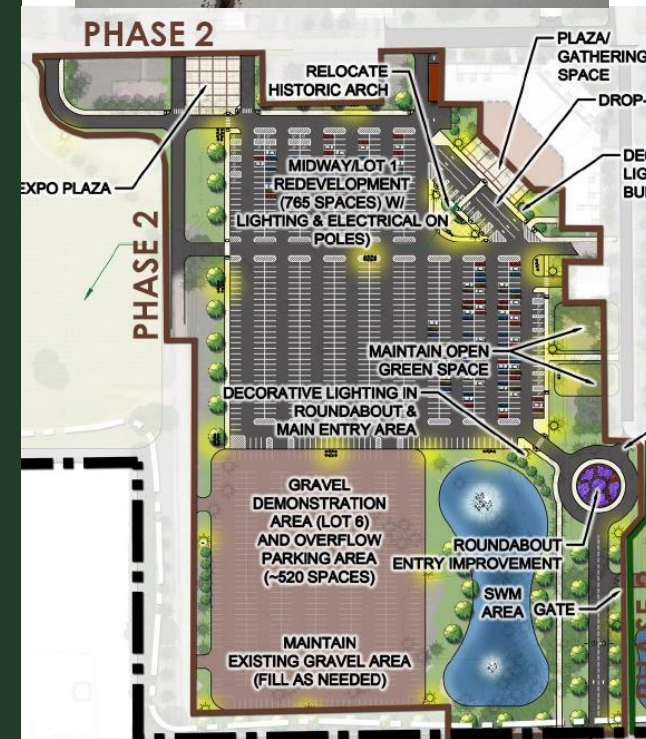
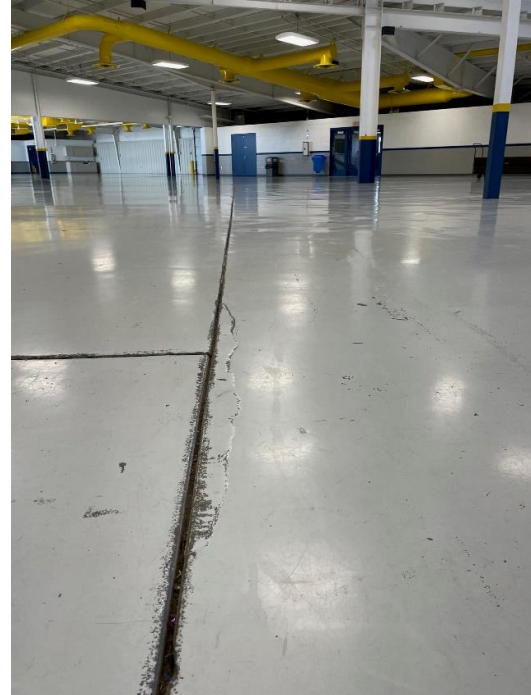


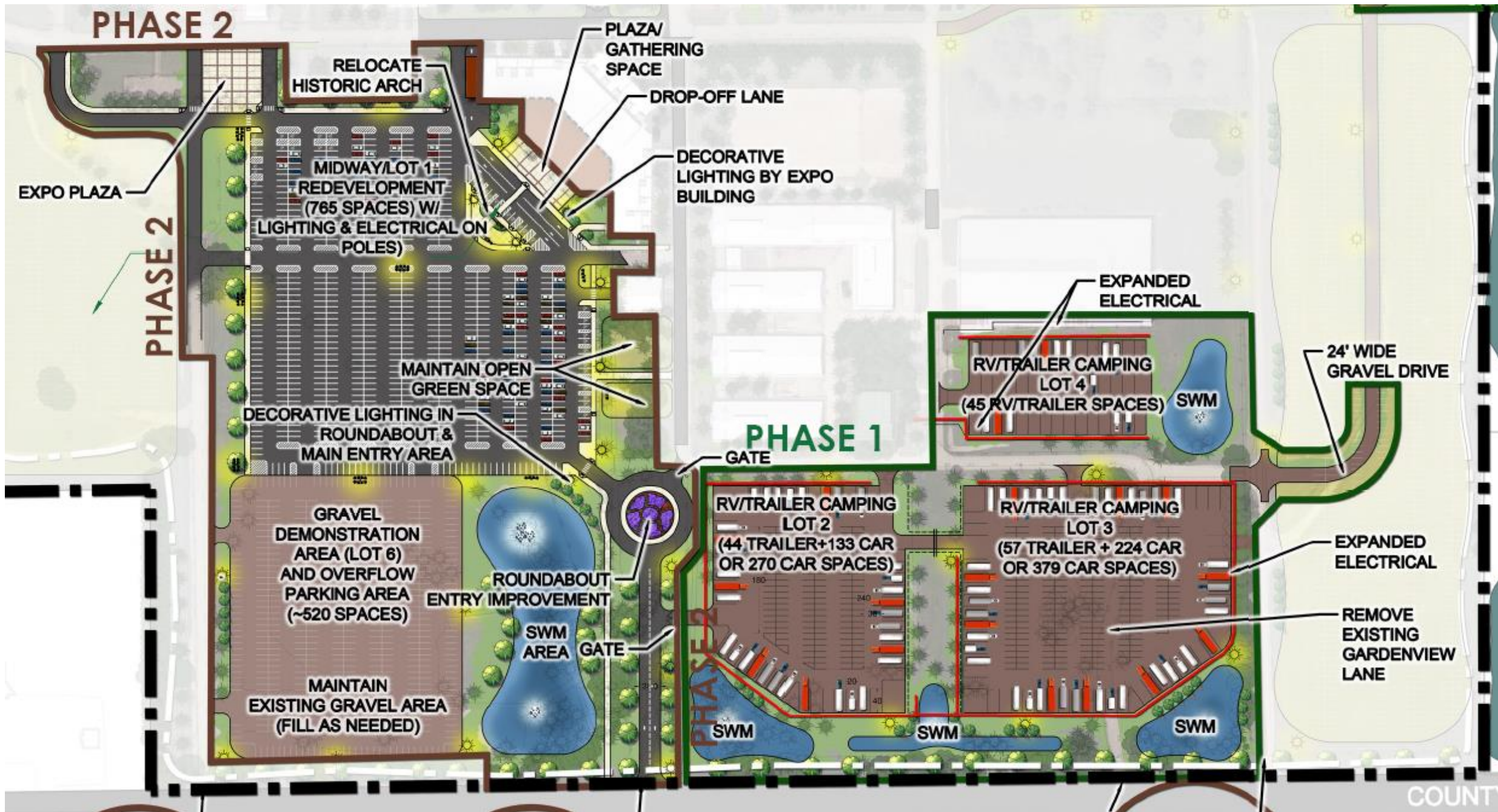
Parks Department 2024 Projects

- Sunnyview Exposition Center West Campus Engineering
- Shelter's 1, 2, and 4 Repairs and ADA Updates
- Parks Paving Project (Community Park, Jerry Finch, and Boom Bay)
- Sunnyview Exposition Center Room Dividers
- Sunnyview Exposition Center Seal Floor



Sunnyview Exposition Center West Campus Improvements

- Hire an engineer to narrow down the design, scope, and cost for the Sunnyview Exposition Center West Campus Improvements.
 - Install a new pond
 - Pulverize, resize, and pave main lot
 - Replace parking lot and entrance lighting
 - Reroute and pave entry road
 - New entrance sign
 - Historic Archway
 - Redesign drop off at front of main expo building
 - Additional gravel, electric, and camping pedestals near County Road Y
- TOTAL - \$443,254





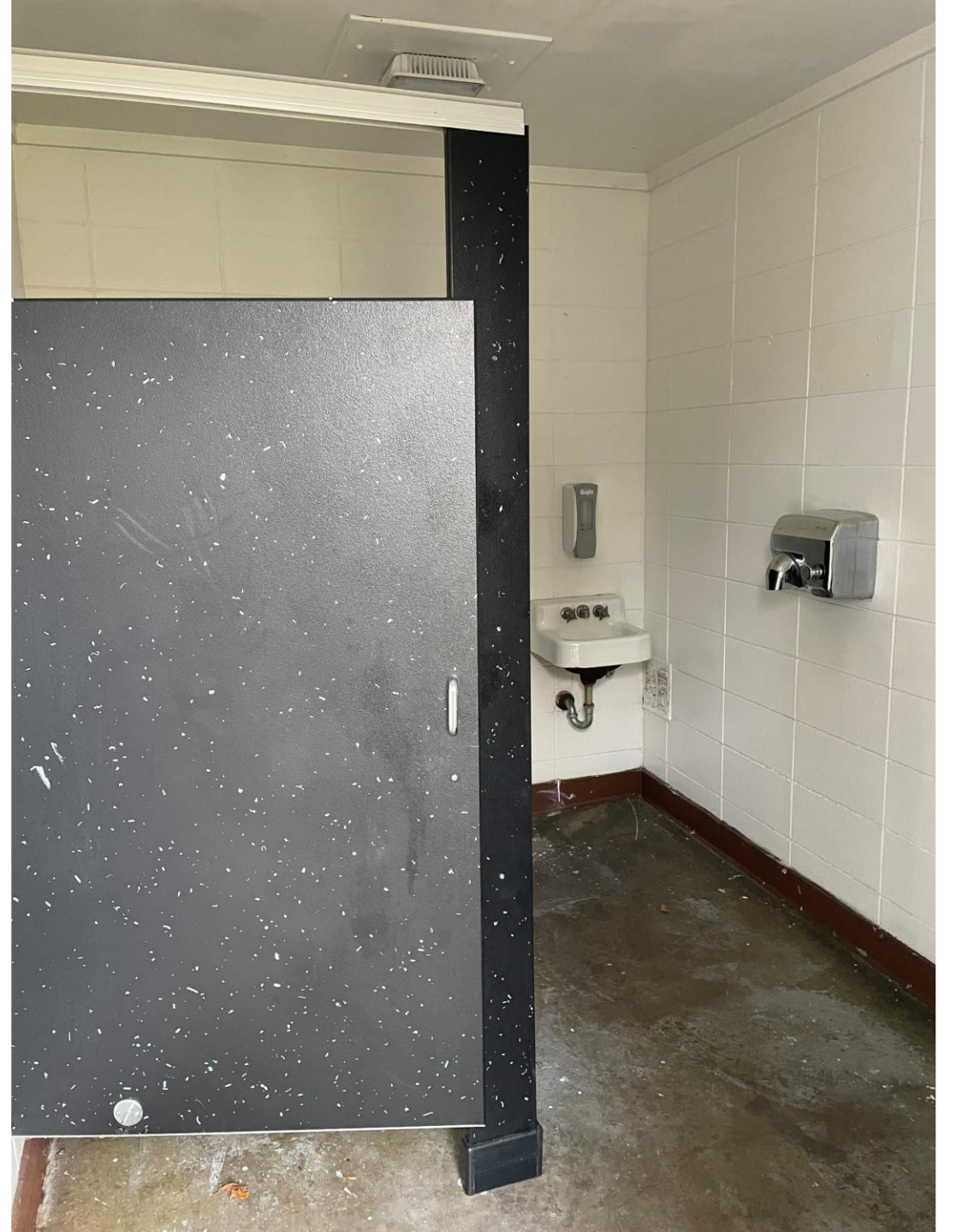


Shelter's 1, 2, and 4 Repairs and ADA Updates

- Repair and Update the Existing 4 Shelters for ADA Compliance, Safety, and Longevity.
 - Replace Asphalt Pad with Concrete Pad
 - Replace Asphalt Access Path to Concrete
 - Replace bathroom doors and widen entries
 - Remove partitions in the bathrooms
 - Seal the bathroom and kitchen floors
 - Sandblast and paint the steel beams
 - Convert lighting to LED
 - Repair and replace soffit around shelters 1 and 2
 - Install ceiling in shelter 4 and replace siding
- TOTAL - \$250,000

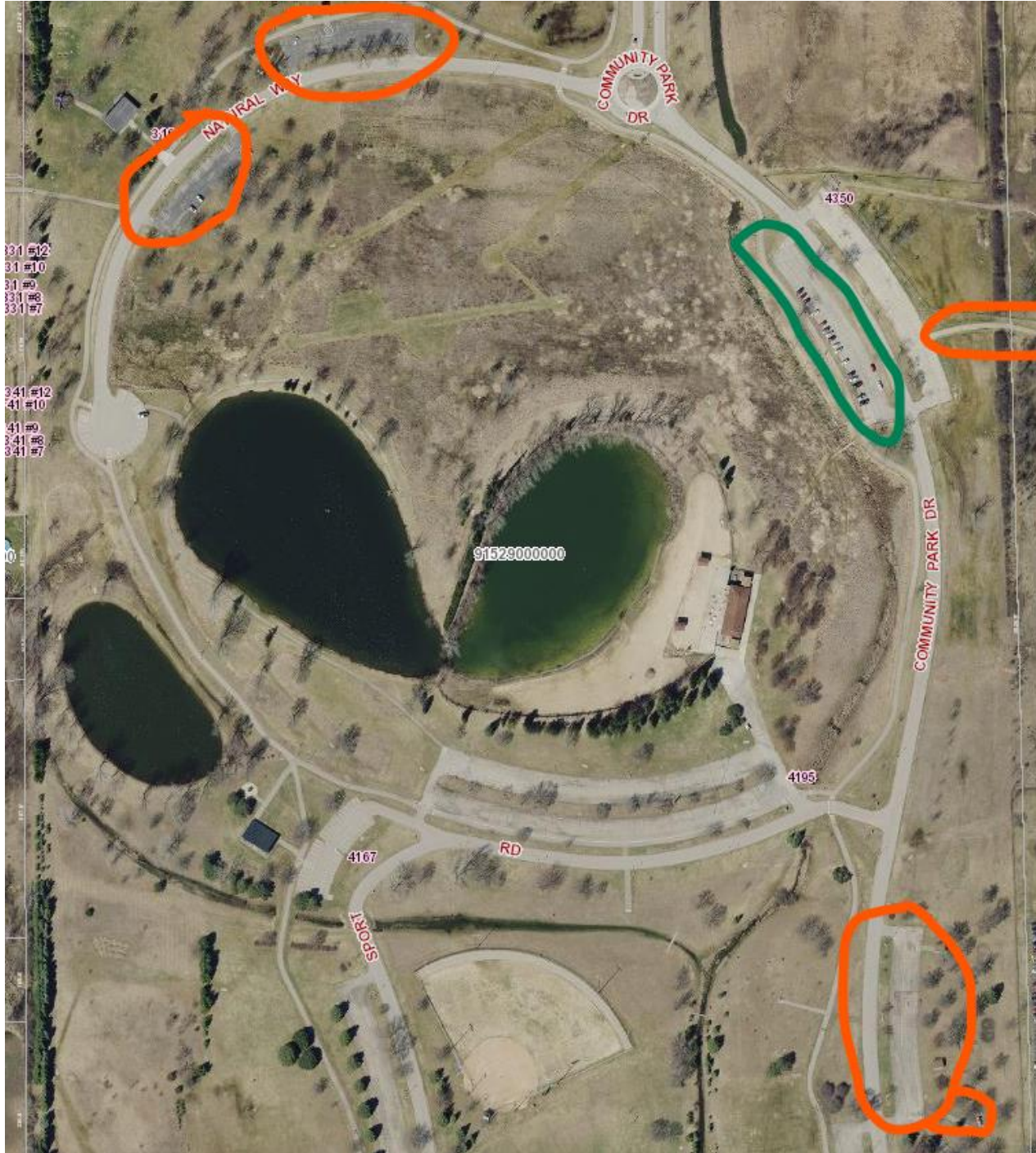






Parks Paving Projects

- Perform Several Paving Projects
 - Pulverize and Repave 2 Adjacent to Shelter 1 and 1 Adjacent to Shelter 4
 - Remove Parking Lot Across from Best Friends Dog Park
 - Pulverize and Repave Service Road. Also fix culverts.
 - Seal Community Park Trail
 - Grade and Pave Jerry Finch Winnebago County Dog Park Entry Drive and Parking Lot
 - Pulverize and Pave Boom Bay Boat Landing Parking Lot
- TOTAL - \$487,000





Sunnyview Exposition Center Room Dividers

- Replace the Room Dividers in the Sunnyview Exposition Center South Wing and Center Hall
 - The room dividers are original with the building.
 - We can no longer find parts for the room dividers.
 - The dividers are utilized by many paid renters in order to divide into breakout rooms.
 - The dividers are also utilized so we can book multiple renters at one time (dividers for center hall and west wing for example)
- TOTAL - \$150,000





Sunnyview Exposition Center Seal Expo Floor

- Seal the Expo Floor
 - Main Hall, West Wing, Front Entrance, and Vestibule Areas Need to be Resealed
 - Front Entrance and Vestibules are further behind than the main hall and west wing
 - We have many users who utilize this space. It is a first impression as you walk into the building.
 - The joints need to be caulked and filled.
- TOTAL - \$200,000

