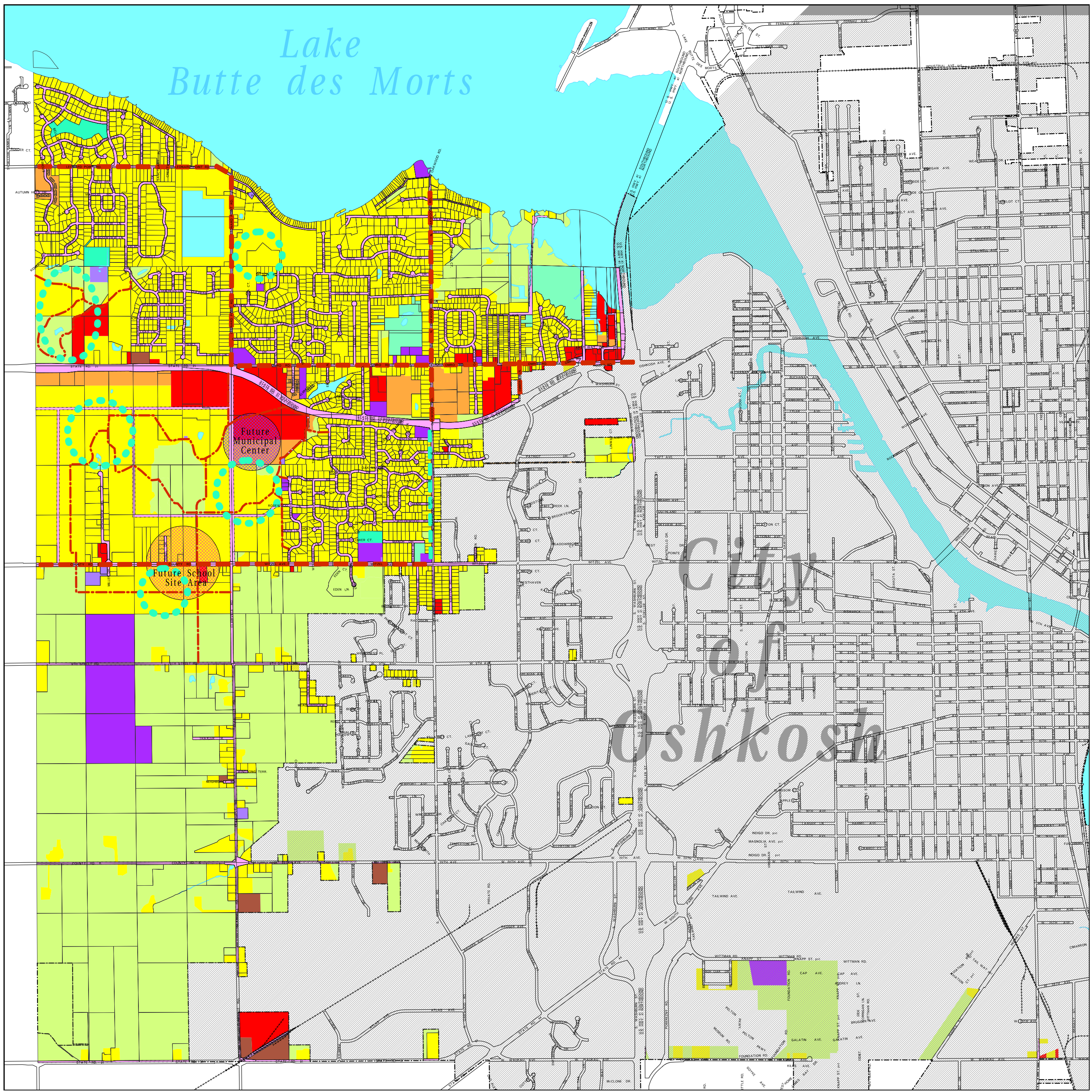


TOWN OF ALGOMA FUTURE LAND USE PLAN



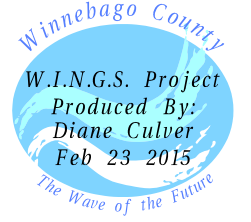
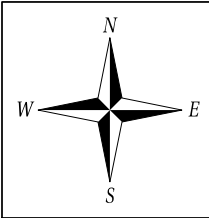
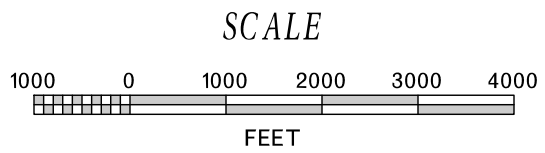
ALGOMA FUTURE LAND USE

- Low Density Residential
- Medium Density Residential
- Commercial
- Industrial
- Non-Metallic Mines
- Public Administration
- Utilities/Communications
- Transportation
- Public Recreational Facilities
- Private Recreational Facilities
- Agricultural/Vacant/Undev. Land
- Water Features
- Proposed Trail - Off Road
- Proposed Trail - Right-of-Way
- Existing Trail - Right-of-Way
- Proposed Park Areas

Adopted by Town Board Nov. 9, 2009
Adopted by County Board Feb. 23, 2010

HISTORY OF RECENT AMENDMENTS

S-T-R	AMENDATORY ORDINANCE #	COMP L.U. PLAN AMENDMENT #	ADOPTION DATE
19-18-16	12/4/10	10-LUPA-001	Dec. 21, 2010



W.I.N.G.S. PROJECT DISCLAIMER
This data was created for use by the Winnebago County Geographic Information System project. Any other use/application of this information is the responsibility of the user and such use/application is at their own risk. Winnebago County disclaims all liability regarding fitness of the information for any use other than Winnebago County business. Copyright © December 31, 2006 Winnebago County. This map reflects data which is protected by copyright.