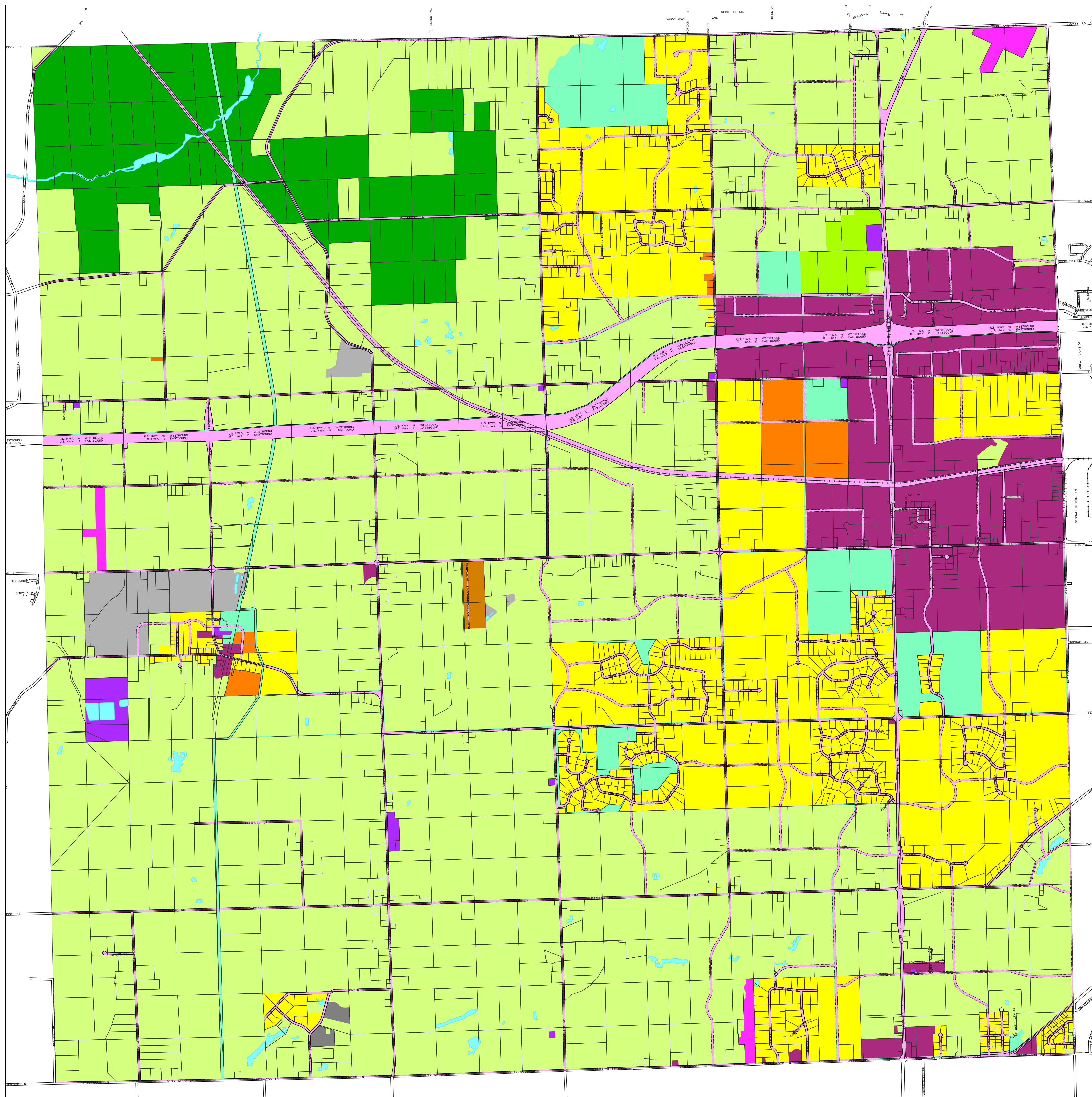


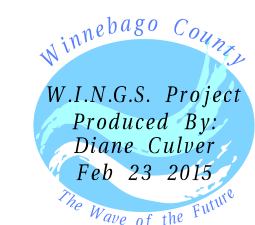
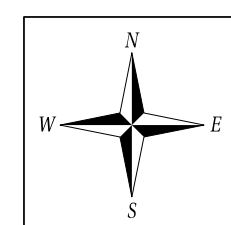
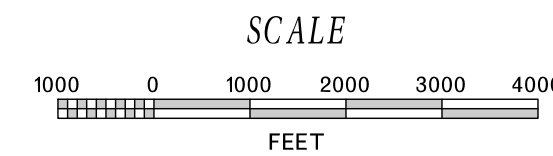
TOWN OF CLAYTON FUTURE LAND USE PLAN



CLAYTON FUTURE LAND USE

- Residential-Single and Two Family
- Multi-Family Residential
- Manufactured Housing Community
- Business (Commercial & Industrial)
- Non-Metallic Mining Sites
- Abandoned Landfill Sites
- Utilities and Public Facilities
- Transportation
- Airport
- Recreation and Conservation
- Wisconsin DNR Lands
- Agriculture/Rural Residential
- Special Agriculture Area
- Open Water/Pool Lakes

Adopted by Town Board Dec. 16, 2009
Adopted by County Board Feb. 23, 2010



W.I.N.G.S. PROJECT DISCLAIMER
This data was created for use by the Winnebago County Geographic Information System project. Any other use/application of this information is the responsibility of the user and such use/application is at their own risk. Winnebago County disclaims all liability regarding fitness of the information for any use other than Winnebago County business. Copyright © December 31, 2006 Winnebago County. This map reflects data which is protected by copyright.