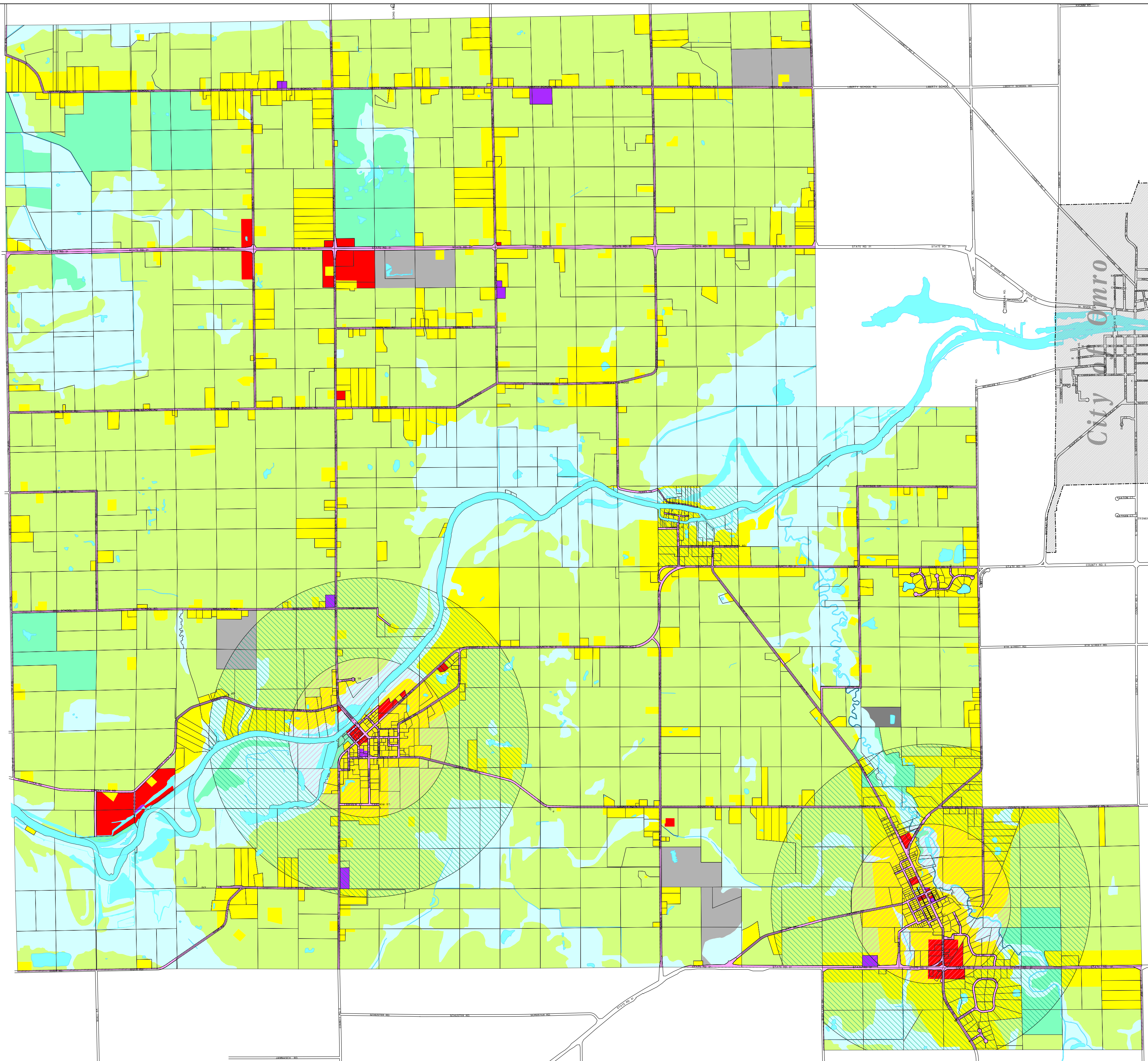


TOWN OF RUSHFORD FUTURE LAND USE PLAN



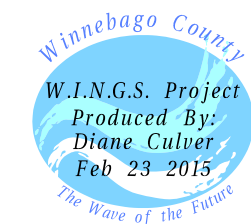
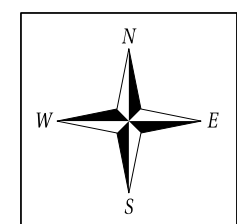
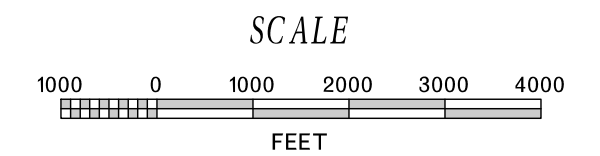
RUSHORD FUTURE LAND USE

- Single & Two Family Residential
- Multi Family/Mobile Homes/Group Qtrs.
- Commercial
- Industrial
- Non-Metallic Mining Sites
- Landfill Sites
- Utilities & Public Facilities
- Transportation
- Recreation and Conservation
- Wetlands
- Undeveloped/Agricultural Land
- Open Water/Pool Lakes

FUTURE LAND USE DENSITY

- Rural Zone (1 unit/20 ac.)
- Transition Zone (1 unit/2.5 ac.)
- Encouragement Zone (Unlimited)

Adopted by Town Board Oct. 28, 2009
Adopted by County Board Feb. 23, 2010



W.I.N.G.S. PROJECT DISCLAIMER
This data was created for use by the Winnepago County Geographic Information System project. Any other use/application of this information is the responsibility of the user and such use/application is at their own risk. Winnepago County disclaims all liability regarding fitness of the information for any use other than Winnepago County business. Copyright © December 31, 2006 Winnepago County. This map reflects data which is protected by copyright.