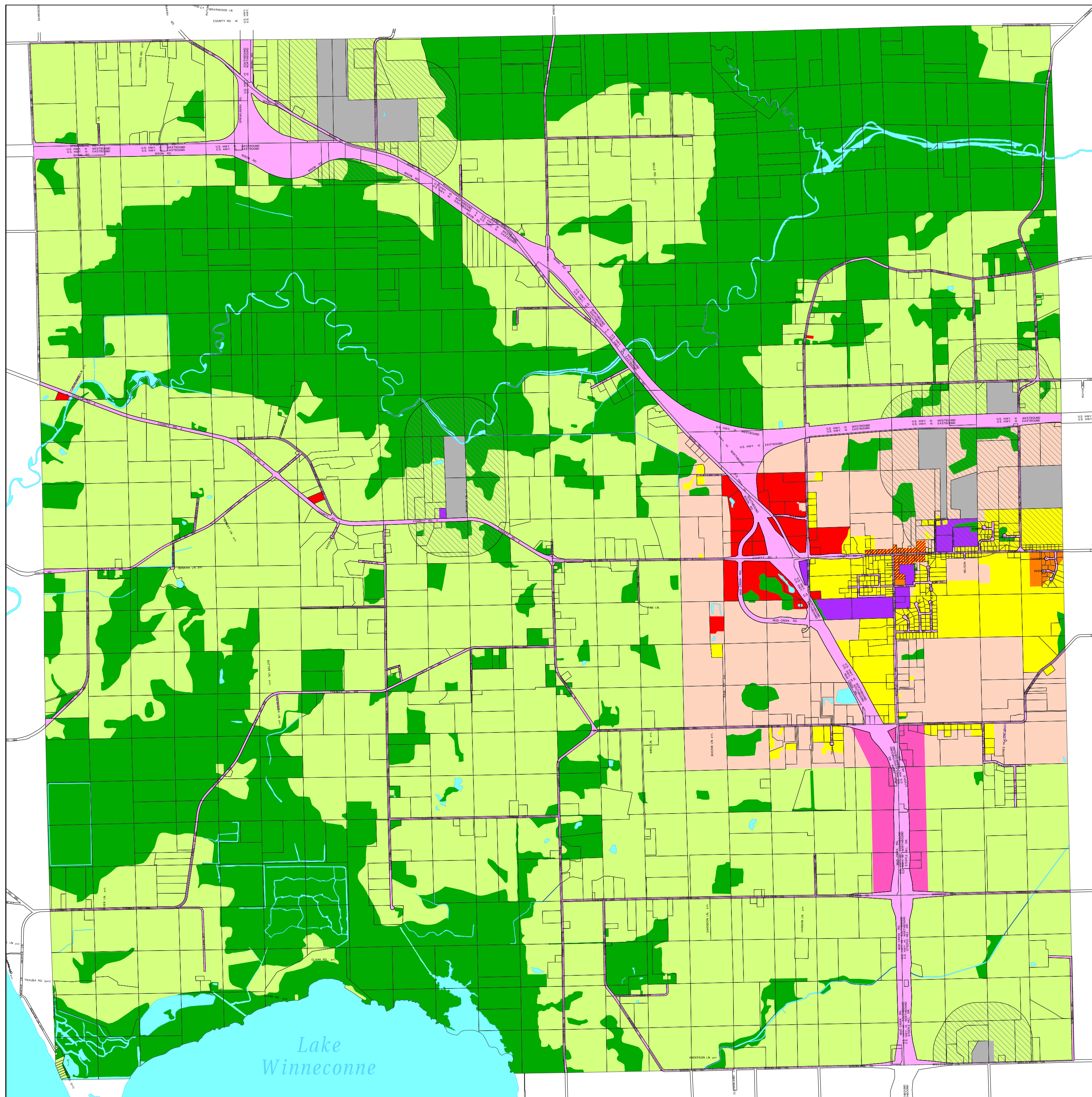


TOWN OF WINCHESTER FUTURE LAND USE PLAN

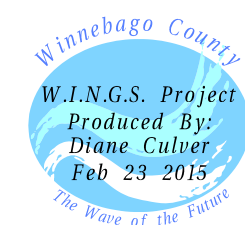
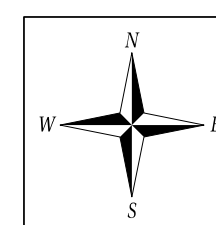
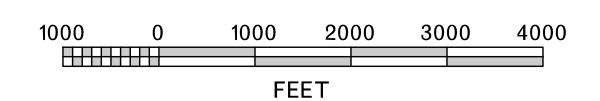


WINCHESTER FUTURE LAND USE

- Single Family and Subdivision Dist.
- Transitional Residential District
- Multi-Unit High Density District
- Neighborhood Commercial
- Highway Commercial
- Rural Commercial
- Extraction District
- Utilities and Community Facilities Dist.
- Transportation
- Environmental Resource District
- Agricultural District
- Water Features
- 1200 Ft. Quarry Buffer

Adopted by Town Board 2009
Adopted by County Board Feb. 23, 2010

SCALE



W.I.N.G.S. PROJECT DISCLAIMER
This data was created for use by the Winnebago County Geographic Information System project. Any other use/application of this information is the responsibility of the user and such use/application is at their own risk. Winnebago County disclaims all liability regarding fitness of the information for any use other than Winnebago County business. Copyright © December 31, 2006 Winnebago County. This map reflects data which is protected by copyright.