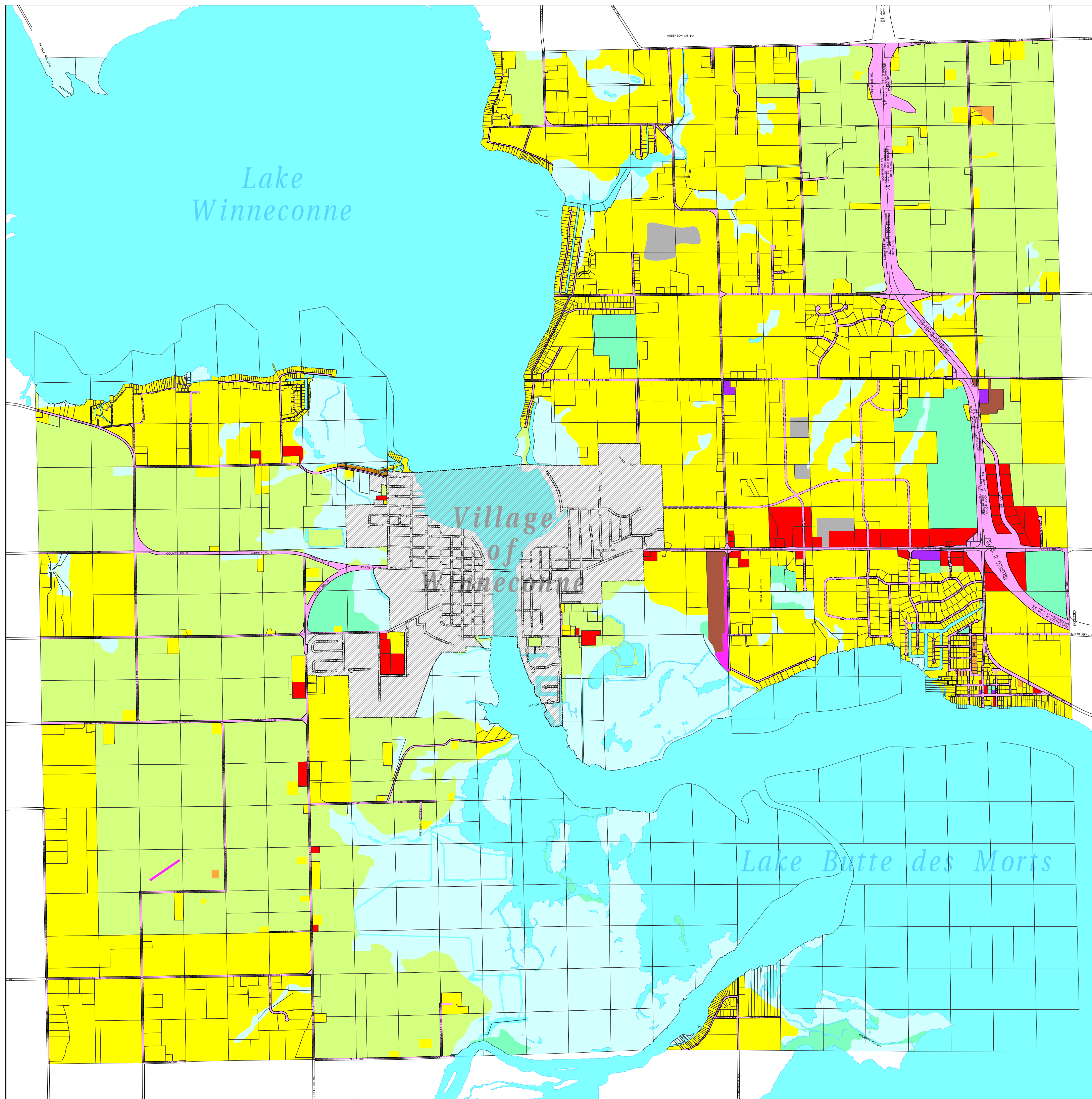


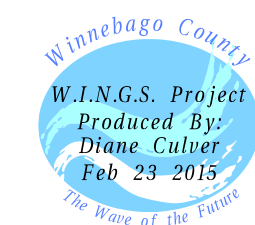
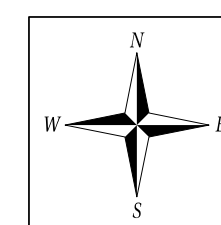
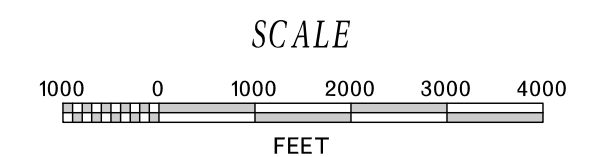
TOWN OF WINNECONNE FUTURE LAND USE PLAN



WINNECONNE FUTURE LAND USE

- Single Family Residential
- Two Family Residential
- Multi-Family Residential
- Mobile Homes/Parks
- Commercial
- Industrial
- Quarries or Sand Pits
- Public & Government Facilities
- Transportation
- Landing Strips
- Parks/Open Space/Golf Course
- Wetlands
- Vacant/Undeveloped/Agricultural
- Lakes, Rivers and Waterways

Adopted by Town Board July, 2005
Adopted by County Board July 24, 2007



W.I.N.G.S. PROJECT DISCLAIMER
This data was created for use by the Winnebago County Geographic Information System project. Any other use/application of this information is the responsibility of the user and such use/application is at their own risk. Winnebago County disclaims all liability regarding fitness of the information for any use other than Winnebago County business. Copyright © December 31, 2006 Winnebago County. This map reflects data which is protected by copyright.